

Public-Private Partnerships in Washington



Anthony L. Buckley
Director,
Innovative Partnerships



Presentation to PNWER

July 26, 2017

Overview

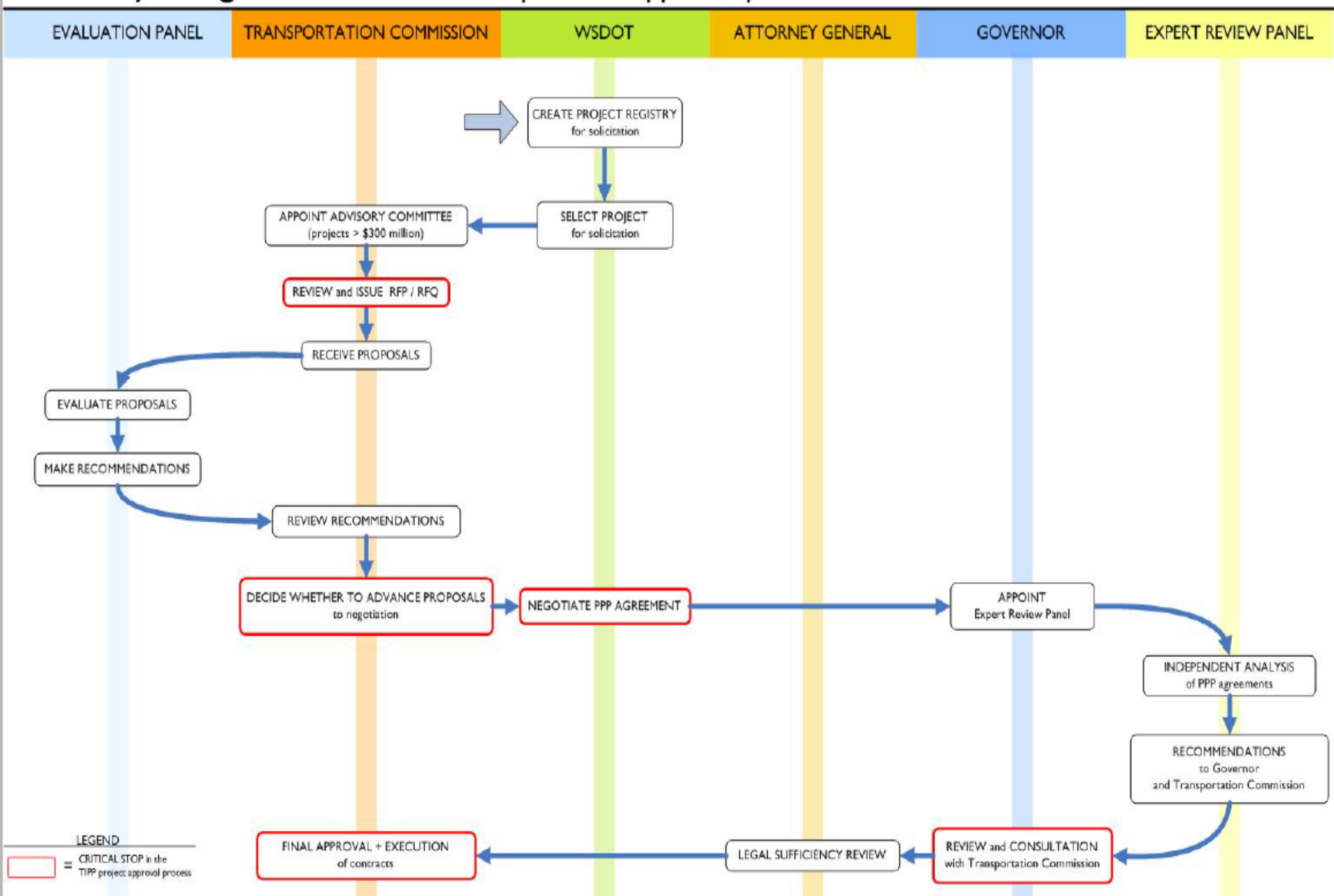
- Washington State's Approach to PPP's
- Unique Challenges
- Current Opportunities in the Pacific Northwest Region

Washington's *PPP Act: Transportation Innovative Partnerships*

Key Elements:

- Public sector owner will decide highest-priority projects for PPP development (project registry)
- State highway toll projects must be financed with state bonds
- Legislative approval is (effectively) required for toll projects

TIPP Project Agreements: Critical stops in the approval process



Current Opportunities

- Colman Dock (Seattle) Ferry Terminal
- Anacortes Ferry Terminal
- Kingsgate Park and Ride (Kirkland, WA)
- US Trestle



Public-Private Partnerships in Washington

For more information, contact: Bucklea@wsdot.wa.gov
(360) 705-7039

Roger Millar
Secretary of Transportation



Anthony L. Buckley
Director,
Innovative Partnerships

