



*Pacific NorthWest  
Economic Region*

*The Pacific Northwest Economic Region Presents:*

# Connecting to Tomorrow

**Monday, August 16th | 1:45pm-2:45pm**



**Moderated by:**



**Richard Gotfried**  
*MLA - Calgary-Fish Creek*  
Government of Alberta



**Senator Lisa Wellman**  
Washington State Legislature



**Scott Osterman**  
*Director*  
Montana Department  
of Commerce



**Francis LaChapelle**  
*Vice President*  
MTA Solutions

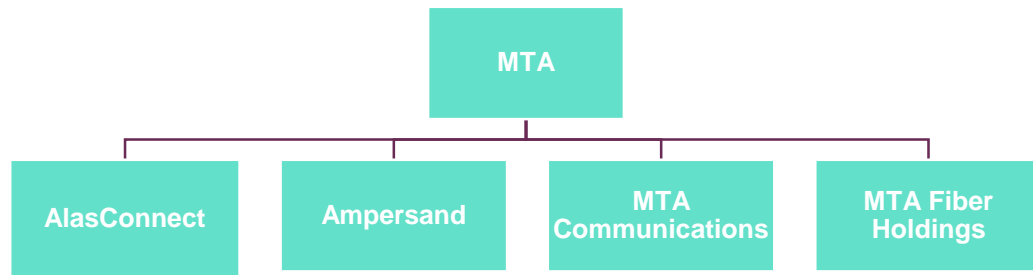


# Building Alaska's Future



# Who We Are

## MTA Companies

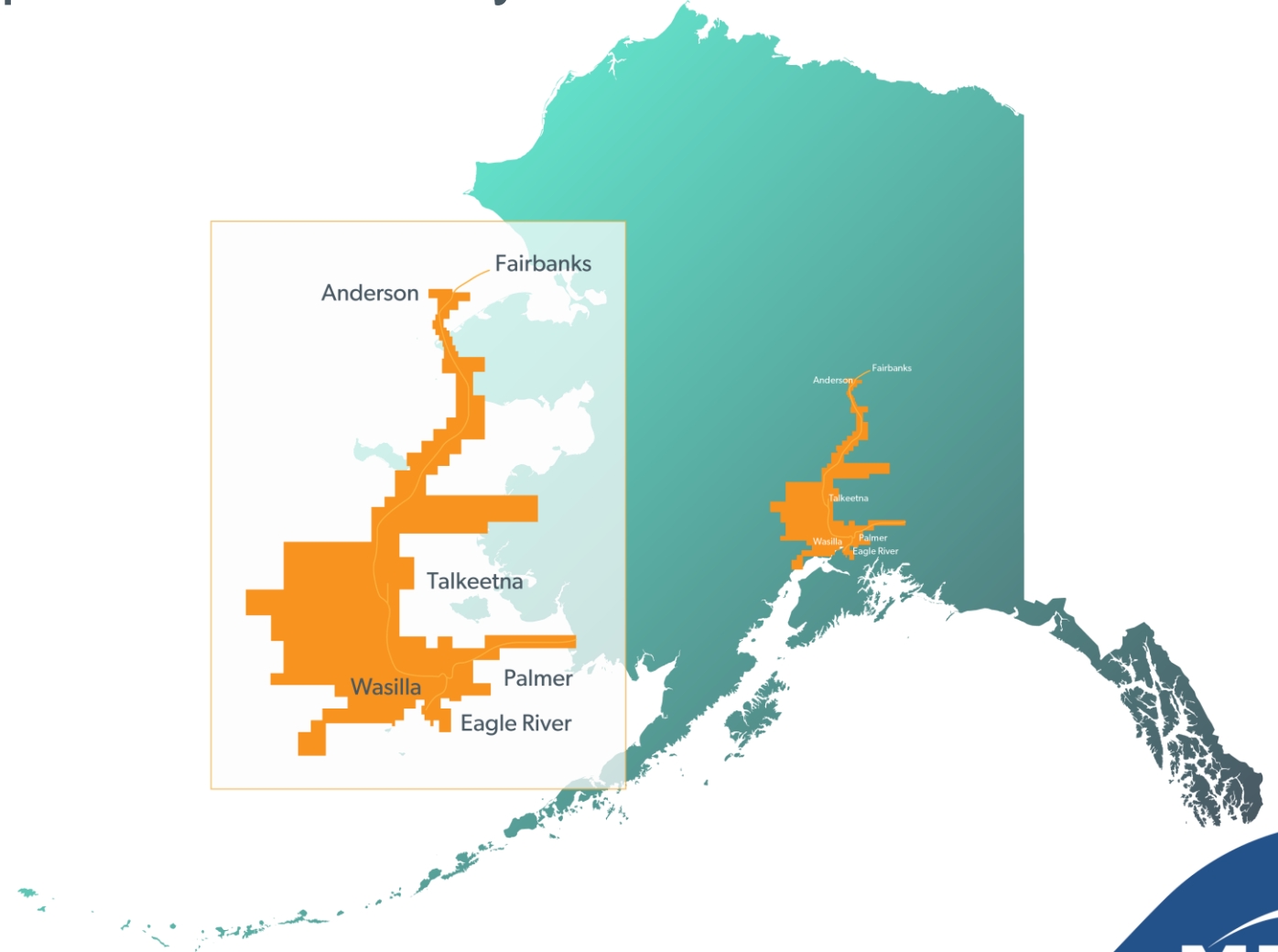


- Established 68 years ago
- 100% locally-owned and operated
- 10,000 square mile service area – Eagle River to Anderson



# Who We Are | A co-op for Alaskans by Alaskans

- Over \$110 million in annual revenue FY 2021
- Over 30,000 members
- Over 400 employees and 130 contractors
- Second-largest technology co-op in the U.S.



# MTA Today AICan ONE

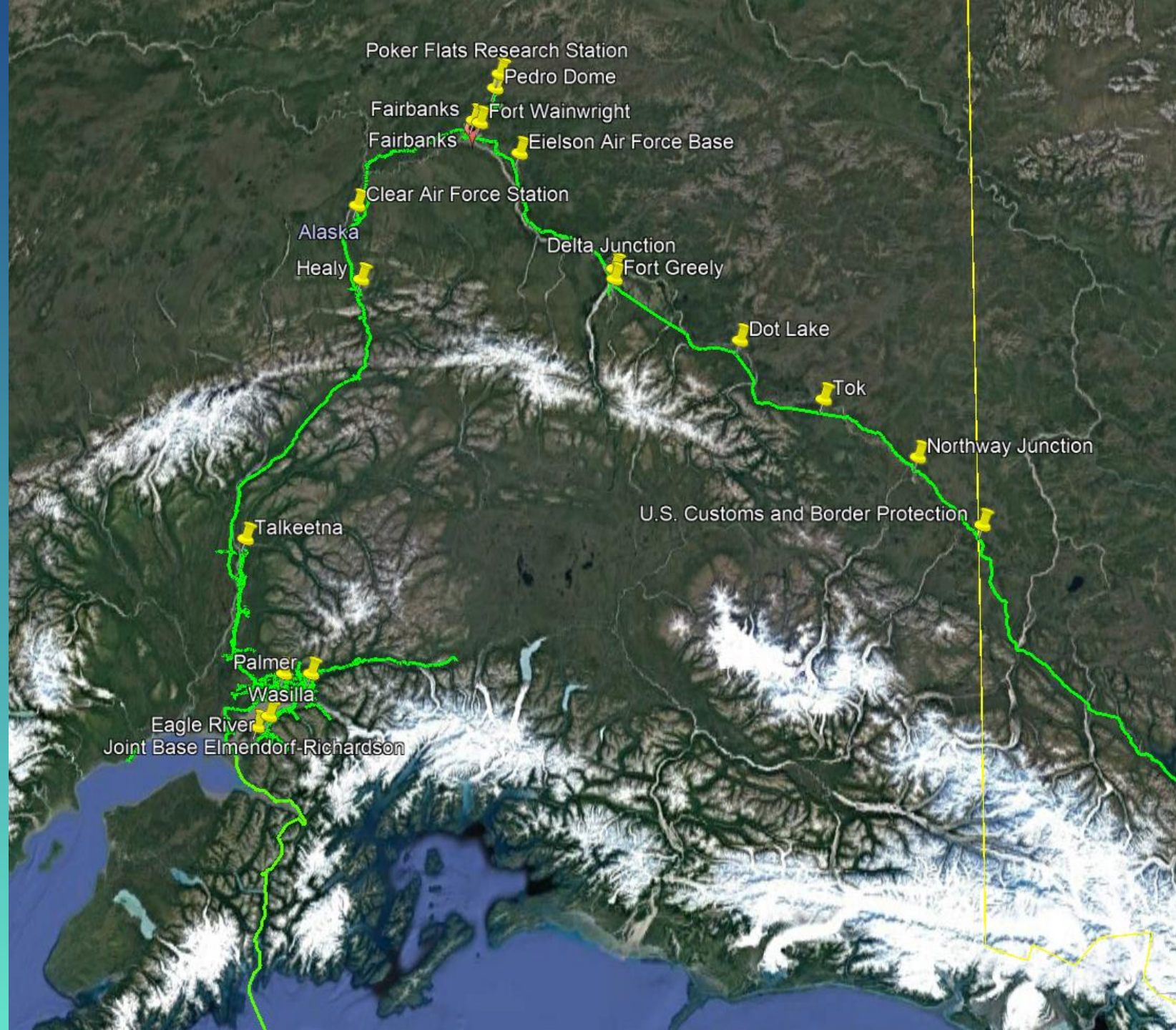
Terrestrial route connecting Alaska  
to any CONUS POP





# MTA Alaska Network

Direct or partner connections  
to all major Alaska  
installations

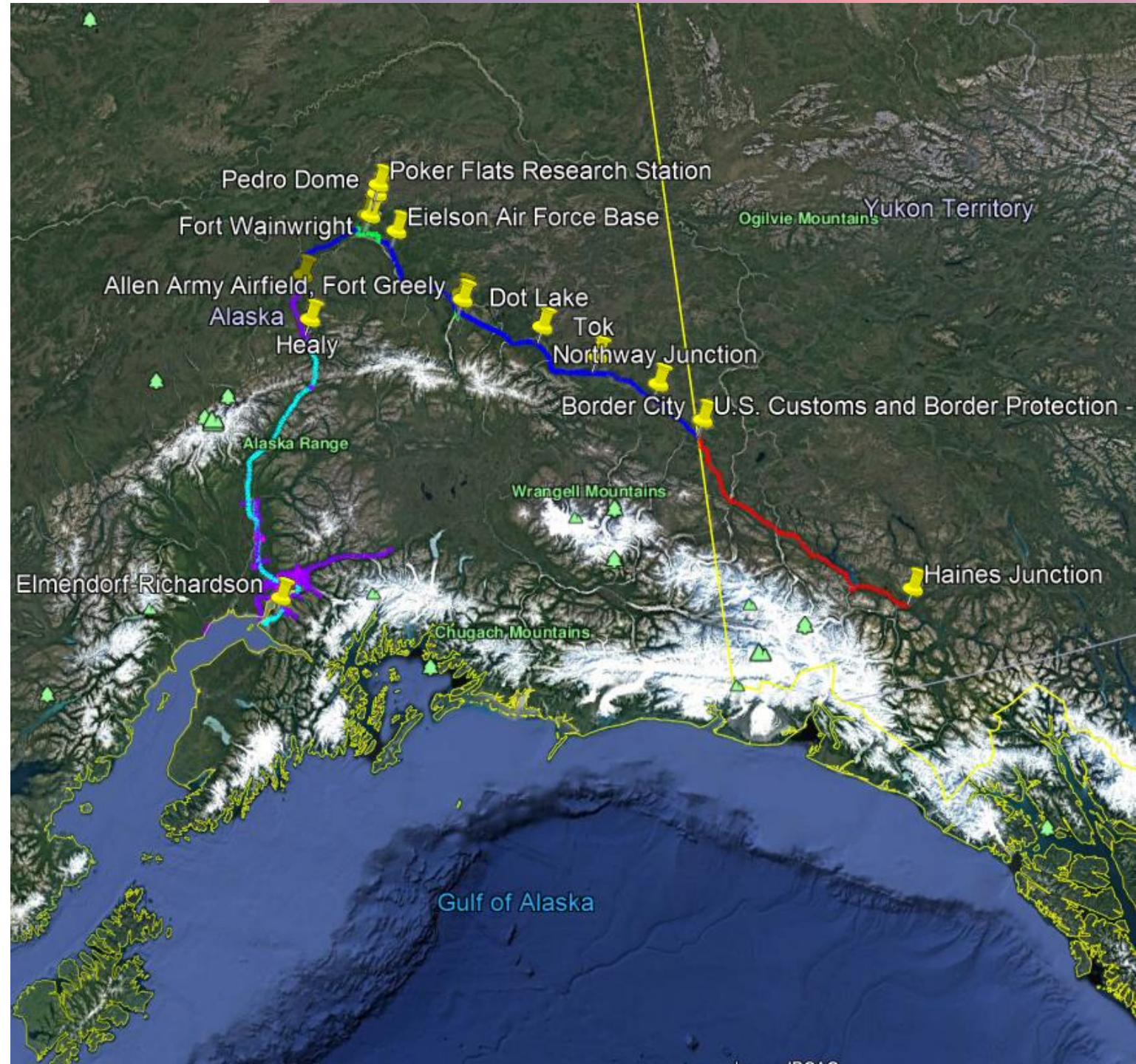




# AICan ONE

MTA and MTAFH are working with local carriers, ISPs and businesses to enable new services in locations previously on limited connections, including:

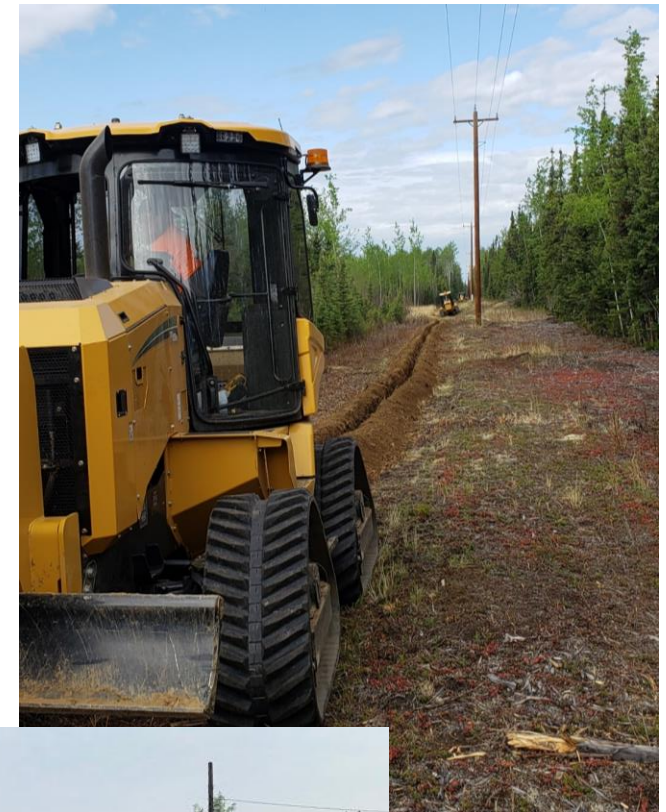
- Harding Lake
- Northway
- Tok
- Border City



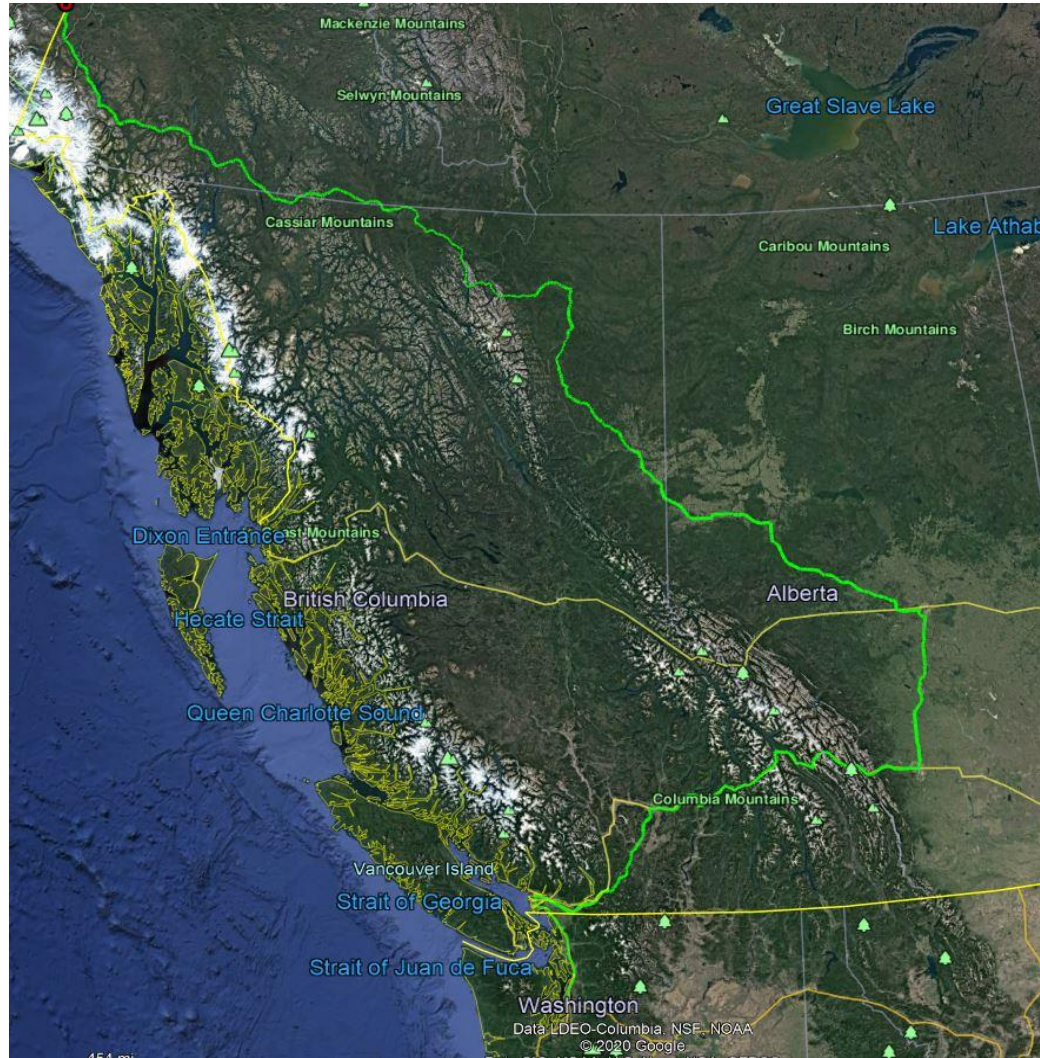


# ROW, Permits & Easements

Eielson Air Force Base Easement	12-24 months
Army Corps of Engineers (4 permits)	9-12 months
Bureau of Land Management (BLM)	9-12 months
Chena Flood Plain authorizations	6-12 months
Fairbanks North Star Borough easements and flood permit	6-9 months
Alyeska (TAPS)	6 months
RCA Assignments from other telco's	6 months
State Historical Preservation Office (SHPO) (had to hire an archaeologist)	6 months
Department of Transportation (20 permits)	3-6 months
5 Private Easements, 1 easement from BLM	4 months
2 Parcel Acquisitions	4 months
Alaska Railroad	2-3 months
Alaska Department of Fish & Game	1 month



# AICan ONE | A Partnership with Northwestel (NWT)

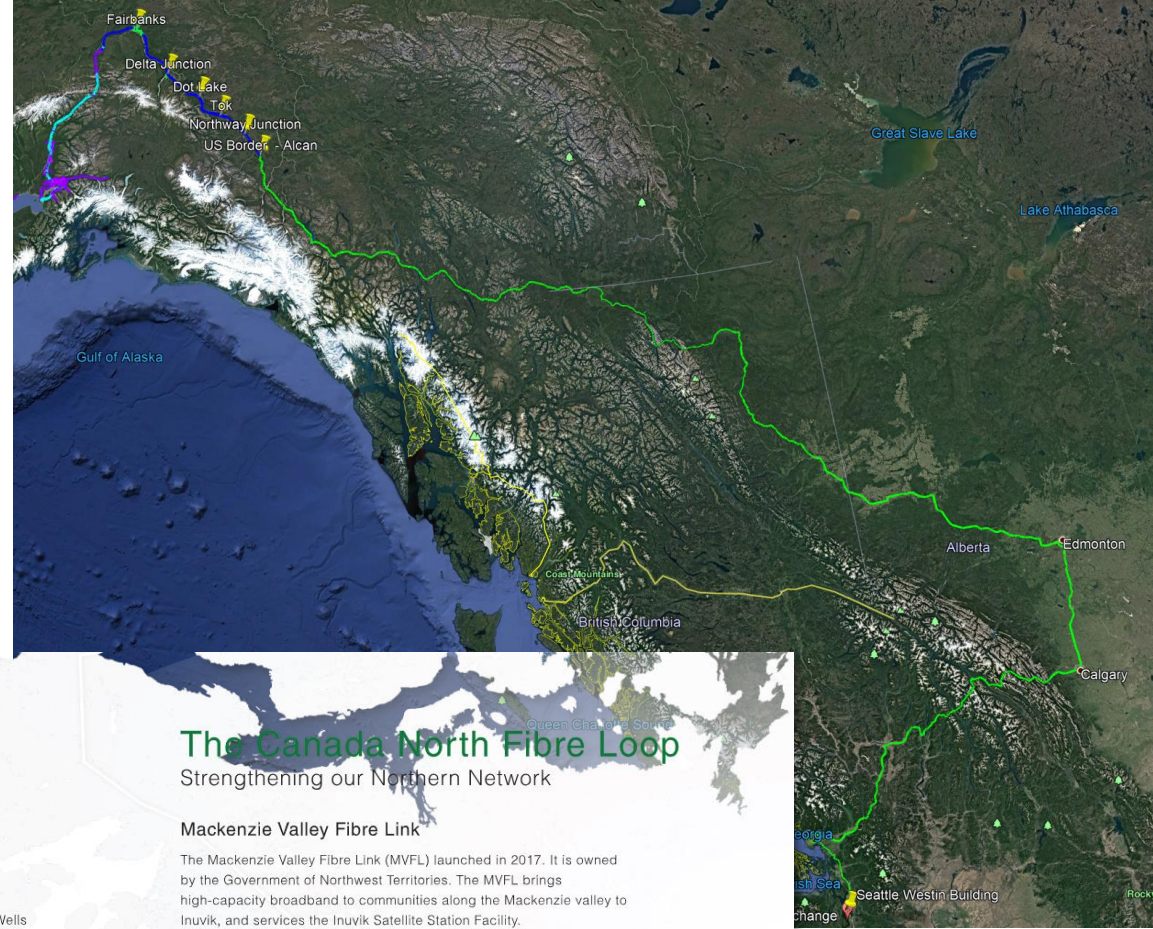


- NWT built north from Haines Junction
- NWT provides connection to Lower 48



# AICan ONE NWT Partnership

- NWT/BC provides connection to CONUS
- Working jointly to provide AK-Canada network for satellite providers, commercial enterprise and restoral/diversity applications



**The Canada North Fibre Loop**  
Strengthening our Northern Network

**Mackenzie Valley Fibre Link**

The Mackenzie Valley Fibre Link (MVFL) launched in 2017. It is owned by the Government of Northwest Territories. The MVFL brings high-capacity broadband to communities along the Mackenzie valley to Inuvik, and services the Inuvik Satellite Station Facility.

**Logos:** FIBRELINK, NorthwesTel

**Map Labels:** Inuvik, Fort McPherson, Tsiigehtchic, Eagle Plains, Fort Good Hope, Norman Wells, Tulita, Wrigley, Dawson City, Stewart Crossing, Pelly Crossing, Carmacks, Fort Simpson, Yellowknife, Haines Junction, Whitehorse, Carcross, Watson Lake, Fort Liard, Fort Providence, Hay River, Fort Resolution, Fort Smith, Toad River, Fort Nelson, High Level, Fort St. John.

**NorthwesTel Logo**

# Telecom | Products and Services

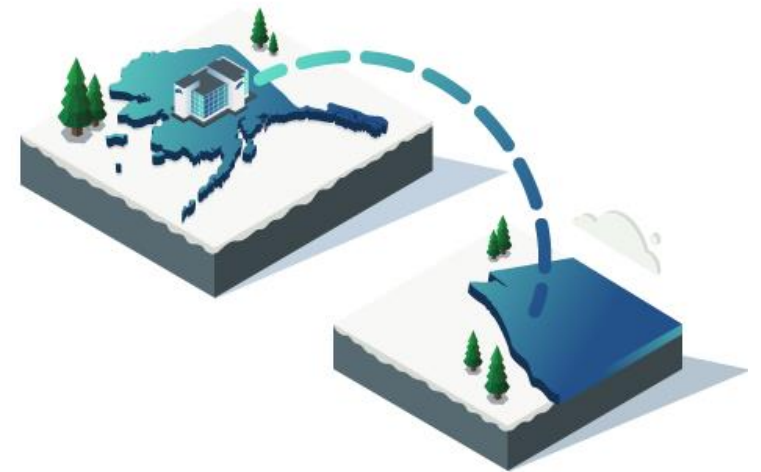
- Long-Haul Transport
  - Unmatched physical diversity on all-terrestrial network with Wave/OTN and Ethernet between AK & CONUS
  - 10 Mbps to 100 Gbps service with standard 1G/10G and 100G interfaces
  - Scalable up to 100 Terabits
- Ethernet
  - MAN/WAN and IP Transport
  - E-Line, E-LAN, E-Tree
  - MPLS segment-routed core
  - 2 Mbps-100 Gbps





# Telecom | Products and Services

- Dedicated Internet Service (DIA)
  - Symmetrical Speeds from 10 Mbps to 10 Gbps
  - Dual-homing supported in primary backup configurations with dynamic failover
  - IPv4, IPv6
- Broadband Internet
  - MTA Shield, totalWiFi™, Identity Theft Protection
- Telephony & VoIP
  - SIP Trunking
  - PRI
  - Unified Communications
  - POTS



# Francis LaChapelle

Vice President, MTA Wholesale

907-227-1814 (m) | [flachapelle@mtasolutions.com](mailto:flachapelle@mtasolutions.com)







# CONNECTING TO TOMORROW

WA State Senator Lisa Wellman, PNWER CoChair  
Early Learning & K-12 Education Chair  
Member, Energy, Environment and Technology Committee



# Apple: Knowledge Navigator

- Alexa
- Siri
- Google
- Wikipedia
- Voice and Written Word Recognition
- Calendaring
- Digital Wallet



# So why the focus on Digital?

The Singularity:

- Speed: Hockey Stick
- 21st Century Digital technology based economy





# COVID - A New World View

- Working from home
- Education - online, remote
- Connectivity is an equity issue: Education and Opportunity
  - Zoom towns - Economic development
  - Tele-Health



# Connectivity - WA Legislation

- **Establish Boardband Office**
- **Funding streams**
- **Cities, ports and PUDs**
- **Technology agnostic but scalable**
- **Device support for K-12**
- **Reduced cost programs/higher speeds**
- **EBB Emergency Broadband Benefit**



# Connectivity - WA Legislation

- **CompSci education standards K-12**
- **CompSci every high school**
- **CompSci substituted**
- **CompSci teacher endorsement**
- **Community based digital navigators**
- **Digital Citizenship**