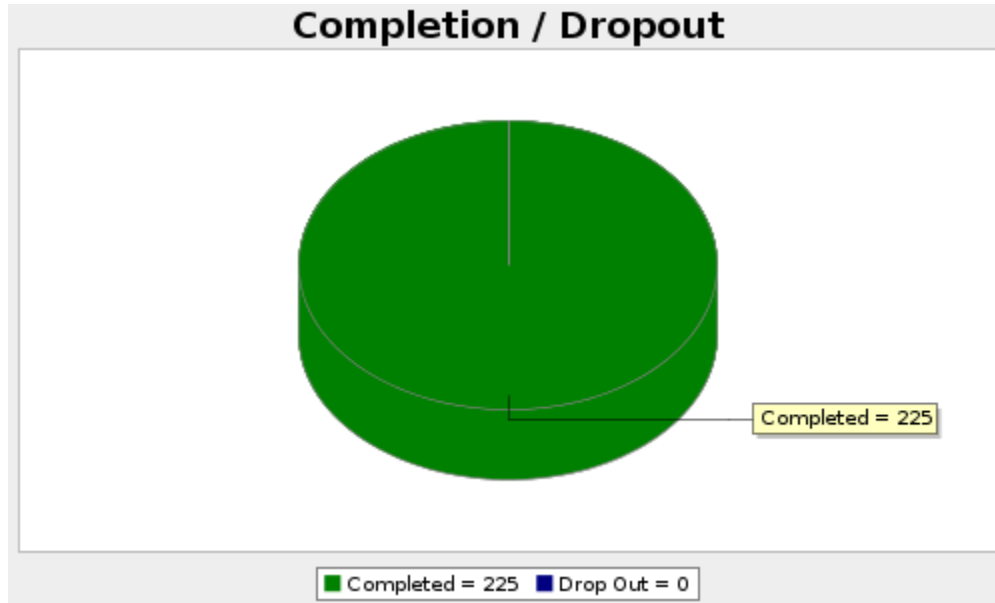


PNWER NAFTA Modernization Survey



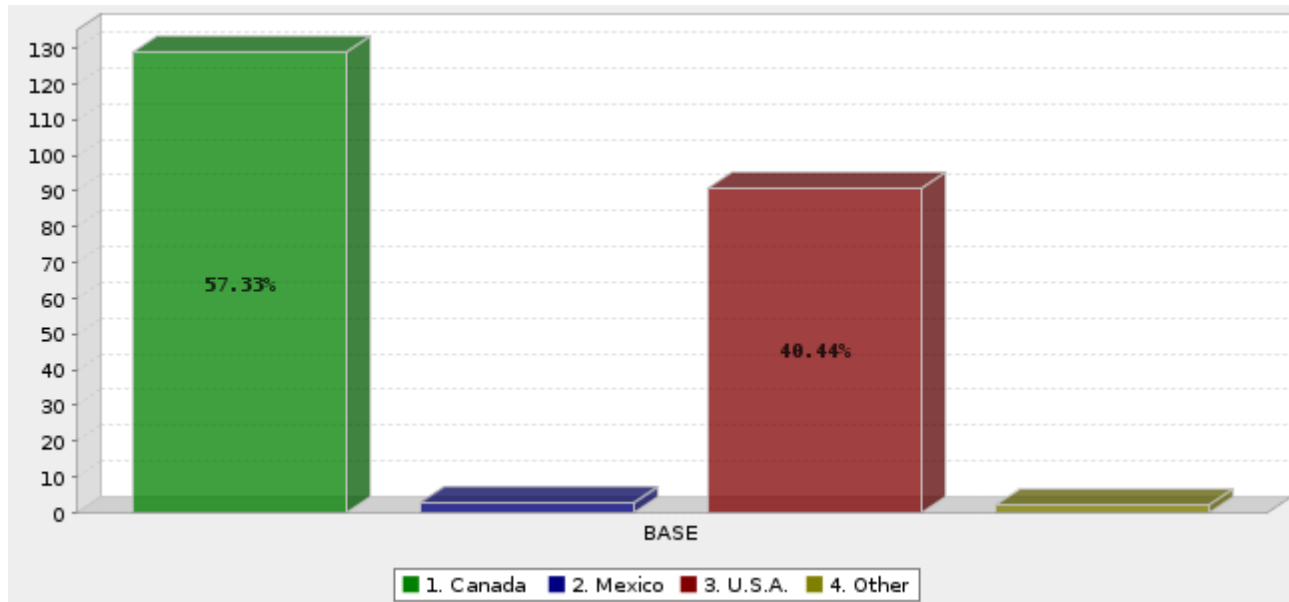
*Pacific North West
Economic Region*

Survey Overview



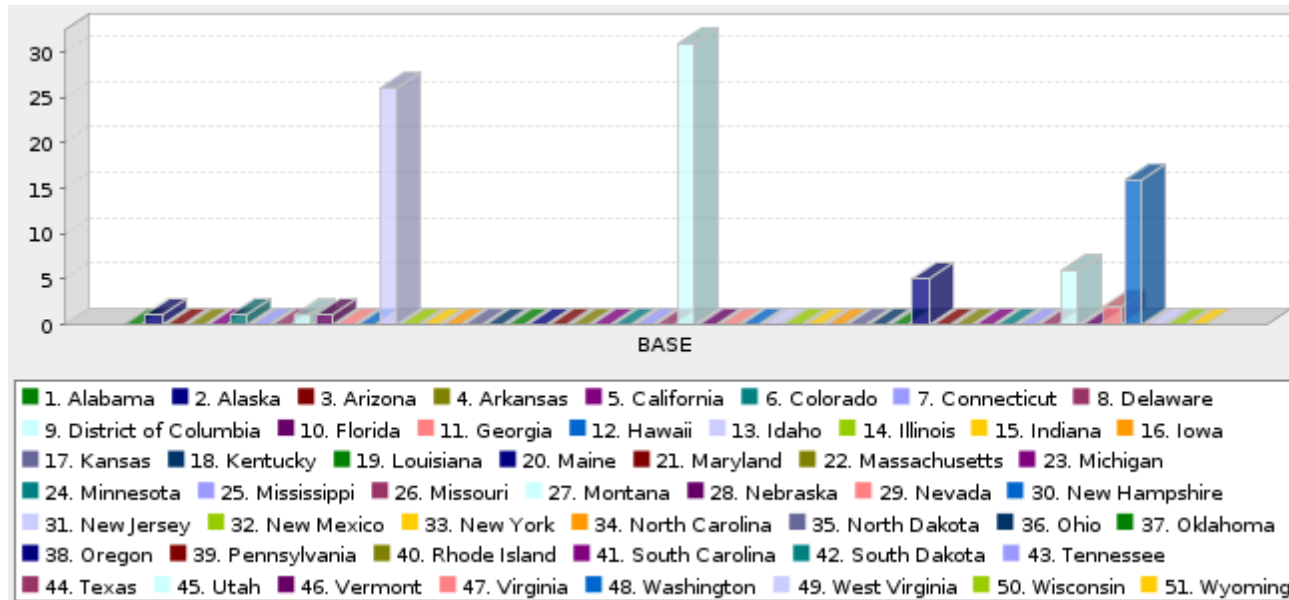
| Viewed | Started | Completed | Completion Rate | Drop Outs (After Starting) | Average Time to Complete Survey |
|--------|---------|-----------|-----------------|----------------------------|---------------------------------|
| 1564 | 225 | 225 | 100% | 0 | 7 minutes |

Q1. Where is your organization based?



| | Answer | Count | Percent | |
|------------------------|---|-------|-----------------------------------|----------------------------------|
| | 1. Canada | 129 | 57.33% | |
| | 2. Mexico | 3 | 1.33% | |
| | 3. U.S.A. | 91 | 40.44% | |
| | 4. Other | 2 | 0.89% | |
| | Total | 225 | 100% | |
| Mean : 1.849 | Confidence Interval @ 95% : [1.719 - 1.979] | | Standard Deviation : 0.997 | |
| | | | | Standard Error : 0.066 |

Q2. In which state is your organization based?



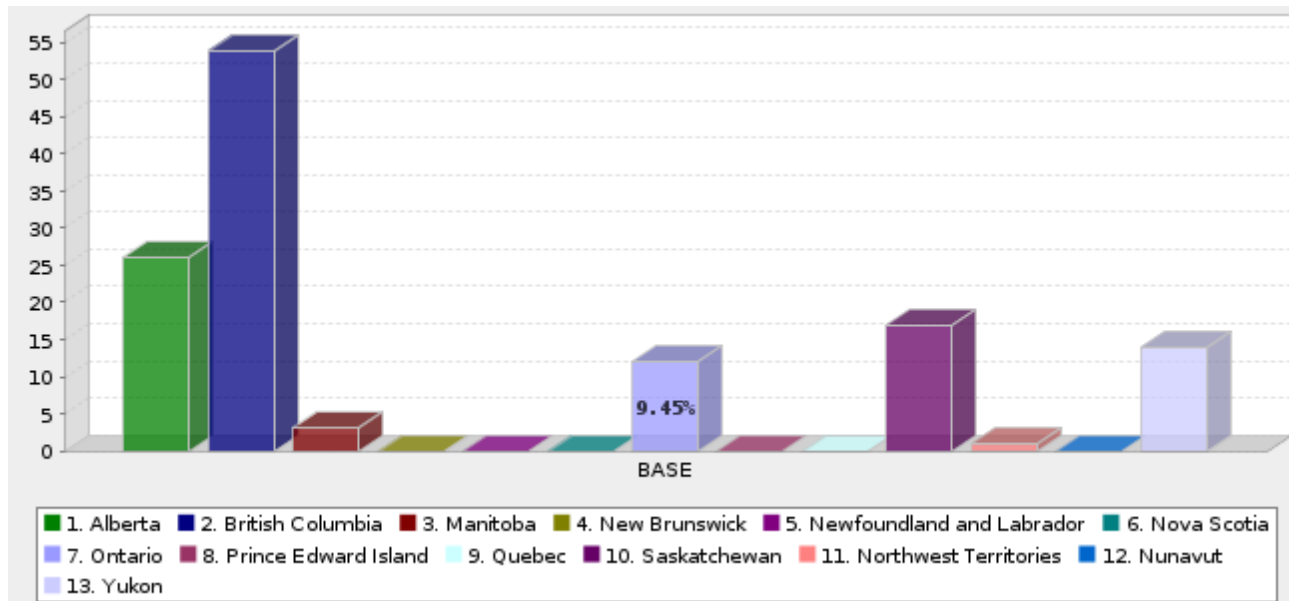
| | Answer | Count | Percent |
|----|-------------|-------|---------|
| 1. | Alabama | 0 | 0.00% |
| 2. | Alaska | 1 | 1.11% |
| 3. | Arizona | 0 | 0.00% |
| 4. | Arkansas | 0 | 0.00% |
| 5. | California | 0 | 0.00% |
| 6. | Colorado | 1 | 1.11% |
| 7. | Connecticut | 0 | 0.00% |
| 8. | Delaware | 0 | 0.00% |

| | | | | |
|-----|----------------------|----|--------|--|
| 9. | District of Columbia | 1 | 1.11% | |
| 10. | Florida | 1 | 1.11% | |
| 11. | Georgia | 0 | 0.00% | |
| 12. | Hawaii | 0 | 0.00% | |
| 13. | Idaho | 26 | 28.89% | |
| 14. | Illinois | 0 | 0.00% | |
| 15. | Indiana | 0 | 0.00% | |
| 16. | Iowa | 0 | 0.00% | |
| 17. | Kansas | 0 | 0.00% | |
| 18. | Kentucky | 0 | 0.00% | |
| 19. | Louisiana | 0 | 0.00% | |
| 20. | Maine | 0 | 0.00% | |
| 21. | Maryland | 0 | 0.00% | |
| 22. | Massachusetts | 0 | 0.00% | |
| 23. | Michigan | 0 | 0.00% | |
| 24. | Minnesota | 0 | 0.00% | |
| 25. | Mississippi | 0 | 0.00% | |
| 26. | Missouri | 0 | 0.00% | |
| 27. | Montana | 31 | 34.44% | |
| 28. | Nebraska | 0 | 0.00% | |
| 29. | Nevada | 0 | 0.00% | |
| 30. | New Hampshire | 0 | 0.00% | |
| 31. | New Jersey | 0 | 0.00% | |
| 32. | New Mexico | 0 | 0.00% | |
| 33. | New York | 0 | 0.00% | |
| 34. | North Carolina | 0 | 0.00% | |

| | | | | |
|-----|----------------|----|--------|--|
| 35. | North Dakota | 0 | 0.00% | |
| 36. | Ohio | 0 | 0.00% | |
| 37. | Oklahoma | 0 | 0.00% | |
| 38. | Oregon | 5 | 5.56% | |
| 39. | Pennsylvania | 0 | 0.00% | |
| 40. | Rhode Island | 0 | 0.00% | |
| 41. | South Carolina | 0 | 0.00% | |
| 42. | South Dakota | 0 | 0.00% | |
| 43. | Tennessee | 0 | 0.00% | |
| 44. | Texas | 0 | 0.00% | |
| 45. | Utah | 6 | 6.67% | |
| 46. | Vermont | 0 | 0.00% | |
| 47. | Virginia | 2 | 2.22% | |
| 48. | Washington | 16 | 17.78% | |
| 49. | West Virginia | 0 | 0.00% | |
| 50. | Wisconsin | 0 | 0.00% | |
| 51. | Wyoming | 0 | 0.00% | |
| | Total | 90 | 100% | |

| | | | |
|-------------------------|--|------------------------------------|----------------------------------|
| Mean : 28.044 | Confidence Interval @ 95% : [25.182 - 30.907] | Standard Deviation : 13.854 | Standard Error : 1.460 |
|-------------------------|--|------------------------------------|----------------------------------|

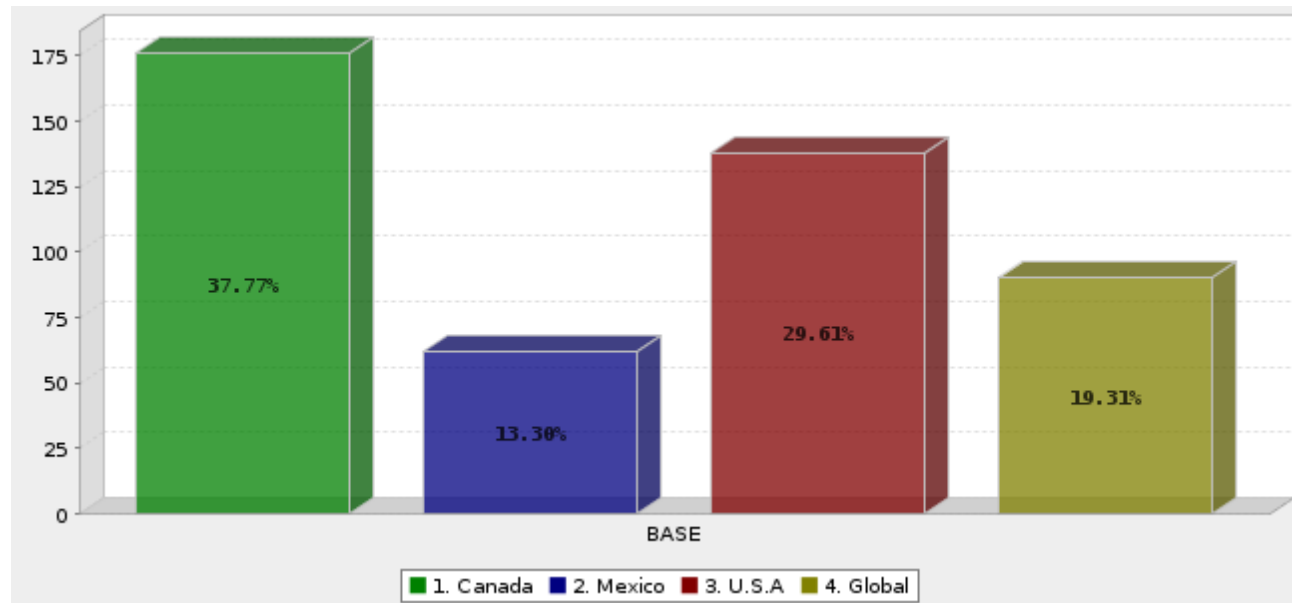
Q3. In which province or territory is your organization based?



| | Answer | Count | Percent |
|----|---------------------------|-------|---------|
| 1. | Alberta | 26 | 20.47% |
| 2. | British Columbia | 54 | 42.52% |
| 3. | Manitoba | 3 | 2.36% |
| 4. | New Brunswick | 0 | 0.00% |
| 5. | Newfoundland and Labrador | 0 | 0.00% |
| 6. | Nova Scotia | 0 | 0.00% |
| 7. | Ontario | 12 | 9.45% |

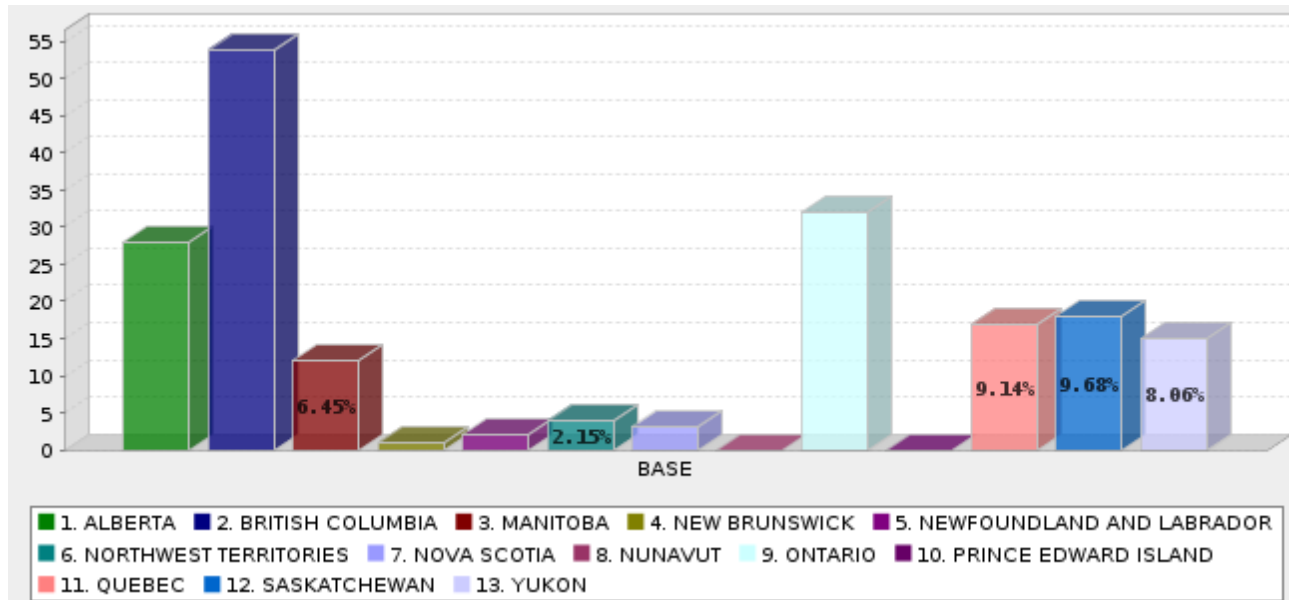
| | | | | |
|-----------------------------------|-----------------------|--|--------|-------------------------------|
| 8. | Prince Edward Island | 0 | 0.00% | |
| 9. | Quebec | 0 | 0.00% | |
| 10. | Saskatchewan | 17 | 13.39% | |
| 11. | Northwest Territories | 1 | 0.79% | |
| 12. | Nunavut | 0 | 0.00% | |
| 13. | Yukon | 14 | 11.02% | |
| | Total | 127 | 100% | |
| Mean : 4.646 | | Confidence Interval @ 95% : [3.902 | | Standard Error : 0.379 |
| | | - 5.389] | | |
| Standard Deviation : 4.275 | | | | |

Q4. In which countries do you do business? (Check all that apply)



| | Answer | Count | Percent | |
|---------------------|--|-------|-----------------------------------|-------------------------------|
| | 1. Canada | 176 | 37.77% | |
| | 2. Mexico | 62 | 13.30% | |
| | 3. U.S.A | 138 | 29.61% | |
| | 4. Global | 90 | 19.31% | |
| | Total | 466 | 100% | |
| Mean : 2.305 | Confidence Interval @ 95% : [2.199 - 2.410] | | Standard Deviation : 1.165 | |
| | | | | Standard Error : 0.054 |

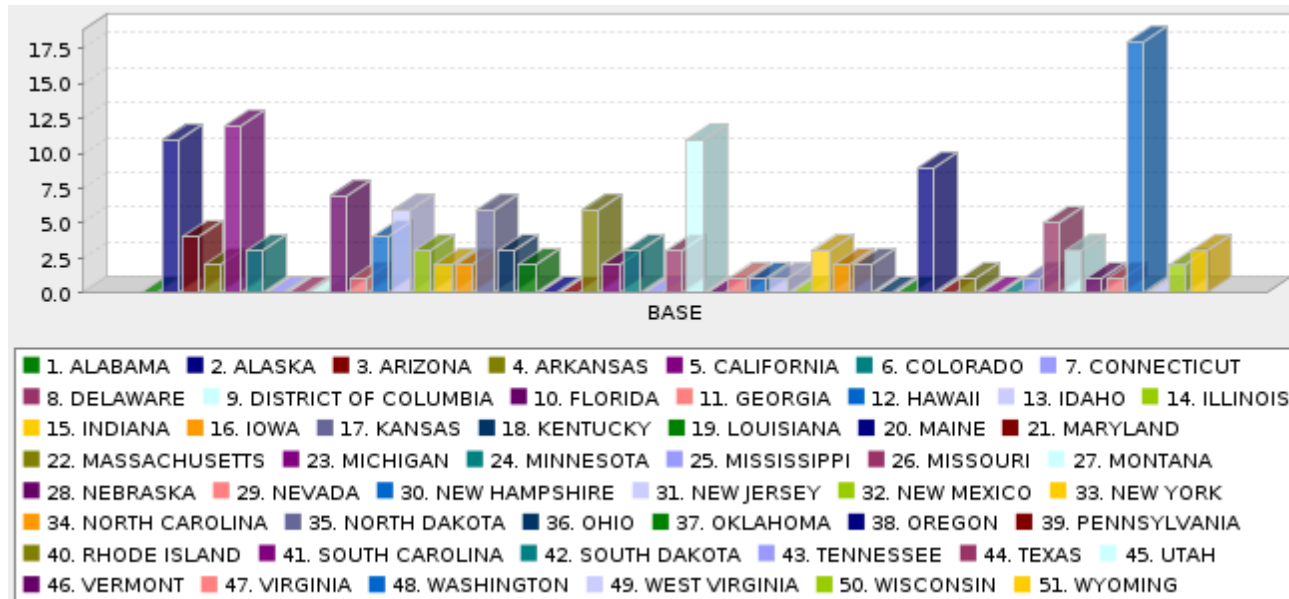
Q5. In which Canadian provinces or territories, do you do the majority of your business? (To select multiple options, hold down the Control/Command key and make your selections. Selection is not required.)



| | Answer | Count | Percent |
|----|------------------|-------|---------|
| 1. | ALBERTA | 28 | 15.05% |
| 2. | BRITISH COLUMBIA | 54 | 29.03% |
| 3. | MANITOBA | 12 | 6.45% |
| 4. | NEW BRUNSWICK | 1 | 0.54% |

| | | | | |
|---------------------|------------------------------|---|--------|--------------------------------------|
| 5. | NEWFOUNDLAND AND LABRADOR | 2 | 1.08% | |
| 6. | NORTHWEST TERRITORIES | 4 | 2.15% | |
| 7. | NOVA SCOTIA | 3 | 1.61% | |
| 8. | NUNAVUT | 0 | 0.00% | |
| 9. | ONTARIO | 32 | 17.20% | |
| 10. | PRINCE EDWARD ISLAND | 0 | 0.00% | |
| 11. | QUEBEC | 17 | 9.14% | |
| 12. | SASKATCHEWAN | 18 | 9.68% | |
| 13. | YUKON | 15 | 8.06% | |
| | Total | 186 | 100% | |
| Mean : 6.005 | | Confidence Interval @ 95% : [5.356 - 6.655] | | Standard Deviation : 4.518 |
| | | | | Standard Error : 0.331 |

Q6. In which U.S. states do you do the majority of your business? (To select multiple options, hold down the Control/Command key and make your selections. Selection is not required.)



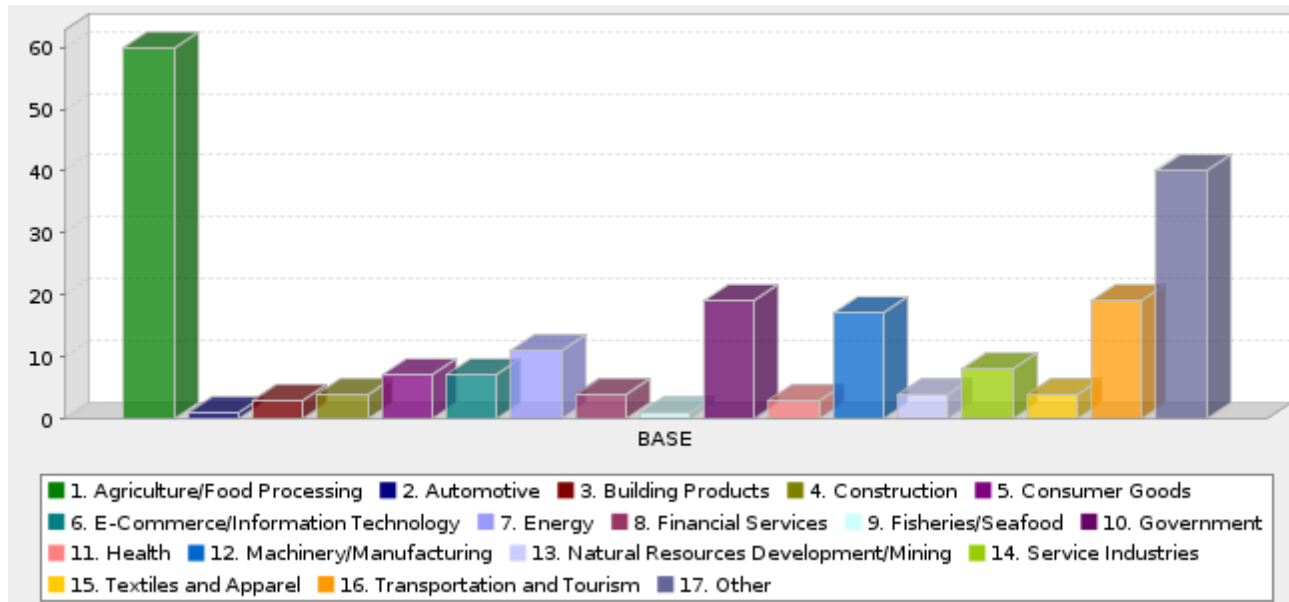
| | Answer | Count | Percent |
|----|------------|-------|---------|
| 1. | ALABAMA | 0 | 0.00% |
| 2. | ALASKA | 11 | 7.48% |
| 3. | ARIZONA | 4 | 2.72% |
| 4. | ARKANSAS | 2 | 1.36% |
| 5. | CALIFORNIA | 12 | 8.16% |

| | | | | |
|-----|----------------------|----|-------|--|
| 6. | COLORADO | 3 | 2.04% | |
| 7. | CONNECTICUT | 0 | 0.00% | |
| 8. | DELAWARE | 0 | 0.00% | |
| 9. | DISTRICT OF COLUMBIA | 0 | 0.00% | |
| 10. | FLORIDA | 7 | 4.76% | |
| 11. | GEORGIA | 1 | 0.68% | |
| 12. | HAWAII | 4 | 2.72% | |
| 13. | IDAHO | 6 | 4.08% | |
| 14. | ILLINOIS | 3 | 2.04% | |
| 15. | INDIANA | 2 | 1.36% | |
| 16. | IOWA | 2 | 1.36% | |
| 17. | KANSAS | 6 | 4.08% | |
| 18. | KENTUCKY | 3 | 2.04% | |
| 19. | LOUISIANA | 2 | 1.36% | |
| 20. | MAINE | 0 | 0.00% | |
| 21. | MARYLAND | 0 | 0.00% | |
| 22. | MASSACHUSETTS | 6 | 4.08% | |
| 23. | MICHIGAN | 2 | 1.36% | |
| 24. | MINNESOTA | 3 | 2.04% | |
| 25. | MISSISSIPPI | 0 | 0.00% | |
| 26. | MISSOURI | 3 | 2.04% | |
| 27. | MONTANA | 11 | 7.48% | |
| 28. | NEBRASKA | 0 | 0.00% | |
| 29. | NEVADA | 1 | 0.68% | |
| 30. | NEW HAMPSHIRE | 1 | 0.68% | |
| 31. | NEW JERSEY | 1 | 0.68% | |

| | | | | |
|-----|----------------|-----|--------|--|
| 32. | NEW MEXICO | 0 | 0.00% | |
| 33. | NEW YORK | 3 | 2.04% | |
| 34. | NORTH CAROLINA | 2 | 1.36% | |
| 35. | NORTH DAKOTA | 2 | 1.36% | |
| 36. | OHIO | 0 | 0.00% | |
| 37. | OKLAHOMA | 0 | 0.00% | |
| 38. | OREGON | 9 | 6.12% | |
| 39. | PENNSYLVANIA | 0 | 0.00% | |
| 40. | RHODE ISLAND | 1 | 0.68% | |
| 41. | SOUTH CAROLINA | 0 | 0.00% | |
| 42. | SOUTH DAKOTA | 0 | 0.00% | |
| 43. | TENNESSEE | 1 | 0.68% | |
| 44. | TEXAS | 5 | 3.40% | |
| 45. | UTAH | 3 | 2.04% | |
| 46. | VERMONT | 1 | 0.68% | |
| 47. | VIRGINIA | 1 | 0.68% | |
| 48. | WASHINGTON | 18 | 12.24% | |
| 49. | WEST VIRGINIA | 0 | 0.00% | |
| 50. | WISCONSIN | 2 | 1.36% | |
| 51. | WYOMING | 3 | 2.04% | |
| | Total | 147 | 100% | |

| | | | |
|----------------------|--|------------------------------------|-------------------------------|
| Mean : 24.265 | Confidence Interval @ 95% : [21.636 - 26.895] | Standard Deviation : 16.265 | Standard Error : 1.341 |
|----------------------|--|------------------------------------|-------------------------------|

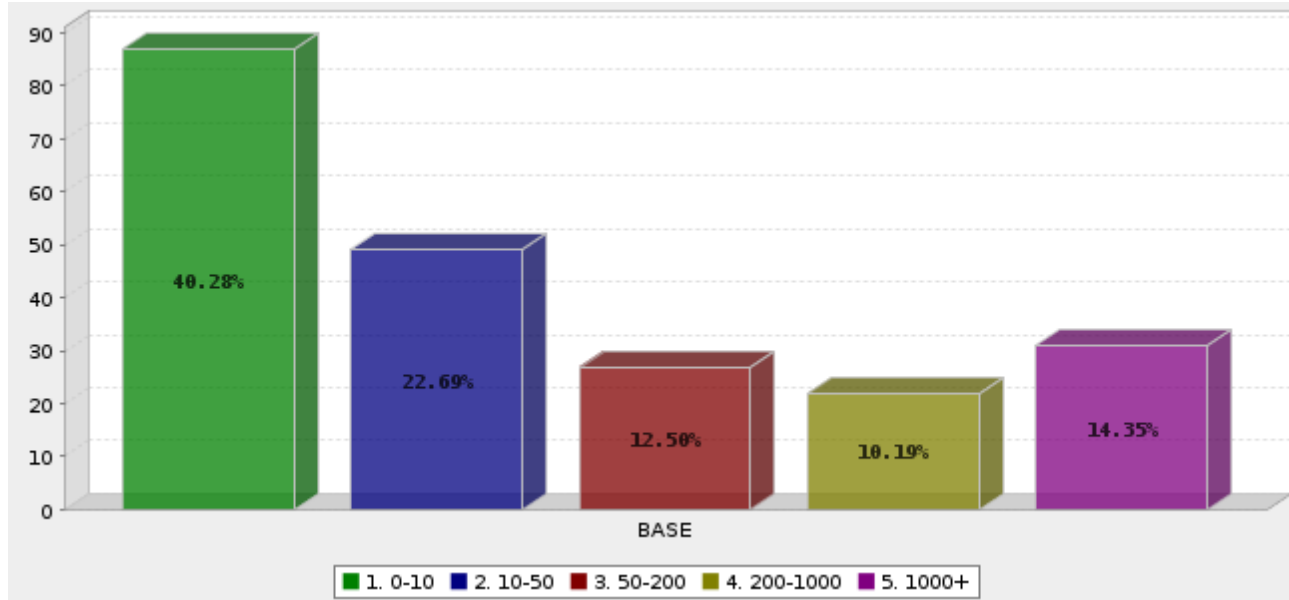
Q7. What is your industry?



| | Answer | Count | Percent |
|----|-----------------------------------|-------|---------|
| 1. | Agriculture/Food Processing | 60 | 28.30% |
| 2. | Automotive | 1 | 0.47% |
| 3. | Building Products | 3 | 1.42% |
| 4. | Construction | 4 | 1.89% |
| 5. | Consumer Goods | 7 | 3.30% |
| 6. | E-Commerce/Information Technology | 7 | 3.30% |

| | | | | |
|---------------------|---|---|-----------------------------------|-------------------------------------|
| 7. | Energy | 11 | 5.19% | |
| 8. | Financial Services | 4 | 1.89% | |
| 9. | Fisheries/Seafood | 1 | 0.47% | |
| 10. | Government | 19 | 8.96% | |
| 11. | Health | 3 | 1.42% | |
| 12. | Machinery/Manufacturing | 17 | 8.02% | |
| 13. | Natural Resources Development/Mining | 4 | 1.89% | |
| 14. | Service Industries | 8 | 3.77% | |
| 15. | Textiles and Apparel | 4 | 1.89% | |
| 16. | Transportation and Tourism | 19 | 8.96% | |
| 17. | Other | 40 | 18.87% | |
| | Total | 212 | 100% | |
| Mean : 9.042 | | Confidence Interval @ 95% : [8.193 - 9.892] | | Standard Error : 0.433 |
| | | | Standard Deviation : 6.311 | |

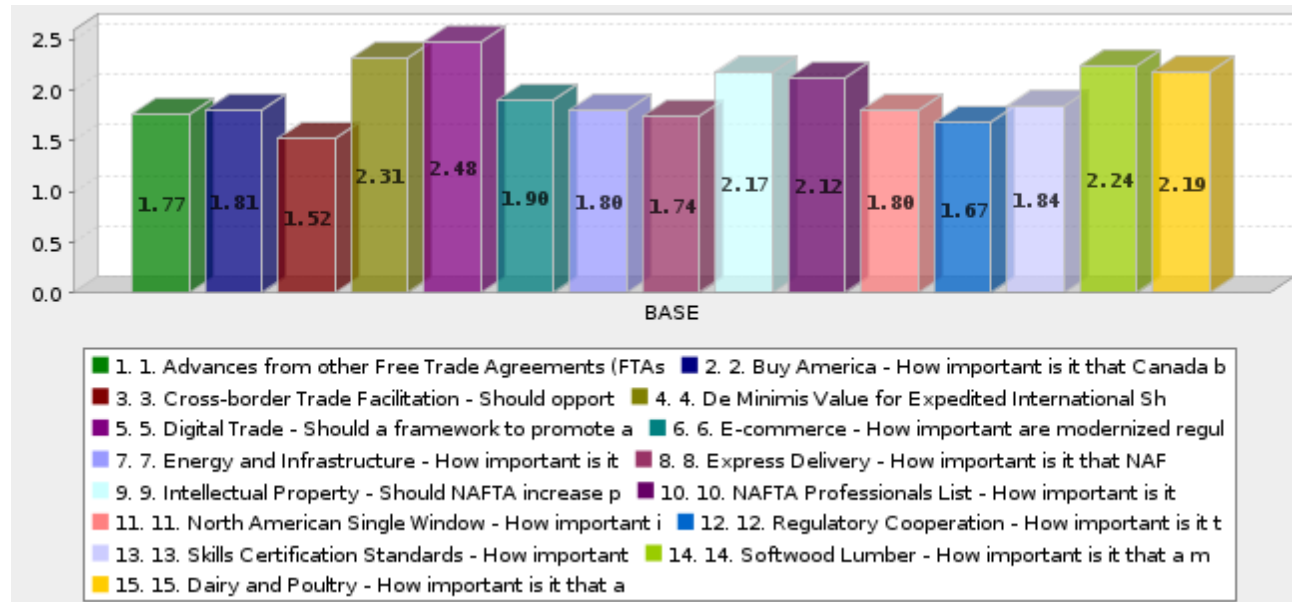
Q8. Approximately how many people are employed in your organization?



| | Answer | Count | Percent | |
|----|----------|-------|---------|--|
| 1. | 0-10 | 87 | 40.28% | |
| 2. | 10-50 | 49 | 22.69% | |
| 3. | 50-200 | 27 | 12.50% | |
| 4. | 200-1000 | 22 | 10.19% | |
| 5. | 1000+ | 31 | 14.35% | |
| | Total | 216 | 100% | |

| | | | |
|------------------------|--|-----------------------------------|-------------------------------------|
| Mean : 2.356 | Confidence Interval @ 95% : [2.163 - 2.550] | Standard Deviation : 1.452 | Standard Error : 0.099 |
|------------------------|--|-----------------------------------|-------------------------------------|

Q9. How important are the following to your organization/industry?



Q9. Overall Matrix Scorecard : How important are the following to your organization/industry?

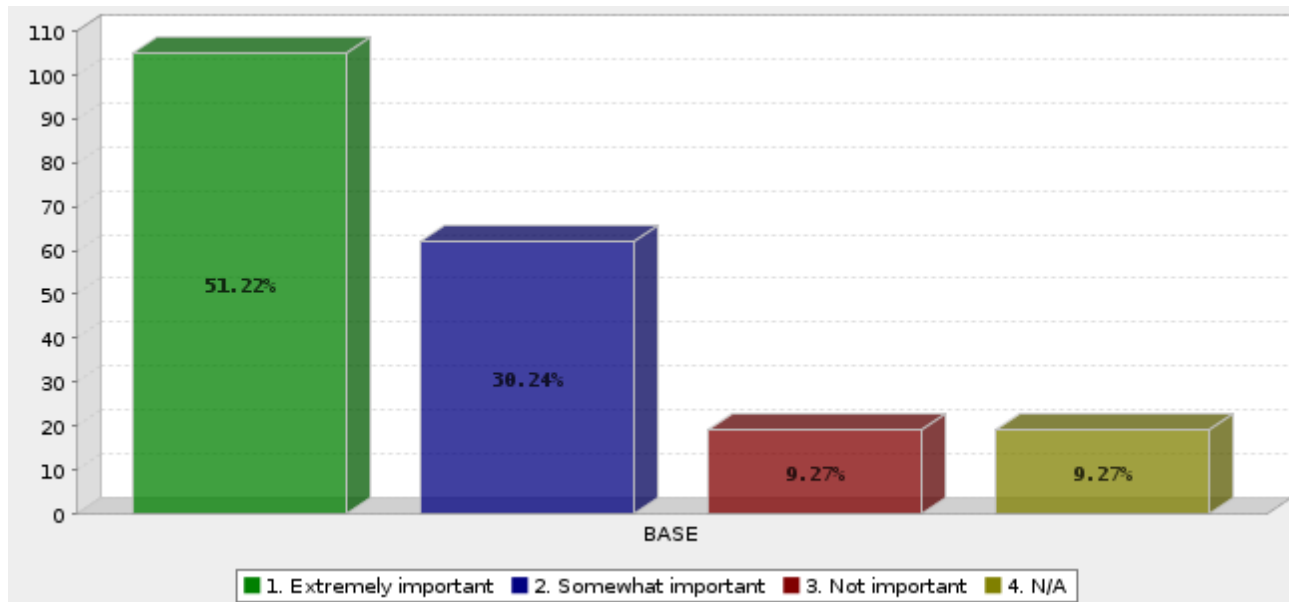
| Question | Count | Score | |
|---|-------|-------|--|
| 1. 1. Advances from other Free Trade Agreements (FTAs) - Review recent FTAs, such as TPP, to adopt modernized provisions, in such areas as simplified rules of origin, importer self-certification, trade facilitation, enforcement, supply | 205 | 1.766 | Survey takers were asked to rank the following principles. Score is the average of the answers, when each answer is assigned the following numerical value: 1- Extremely Important 2- Somewhat Important 3- Not Important 4- N/A |

| | | | | |
|----|--|-----|-------|--|
| | chain security, non-tariff trade barriers, etc. | | | |
| 2. | 2. Buy America - How important is it that Canada be considered "domestic" for the purpose of U.S. federal procurement, as it currently is in the defense sector? | 206 | 1.806 | |
| 3. | 3. Cross-border Trade Facilitation - Should opportunities for trade facilitation and cross-border movement of goods through such efforts as preclearance, expanded border crossing capacity, etc. be encouraged? | 210 | 1.519 | |
| 4. | 4. De Minimis Value for Expedited International Shipment - The de minimis threshold for the U.S. is \$800, \$20 for Canada, and \$300 for Mexico. How important is it that these thresholds be aligned? | 205 | 2.312 | |
| 5. | 5. Digital Trade - Should a framework to promote and govern digital trade (digital goods and services, for example, software, music, films, games, etc.) be established? | 205 | 2.478 | |
| 6. | 6. E-commerce - How important are modernized regulations on e-commerce? | 204 | 1.897 | |
| 7. | 7. Energy and Infrastructure - How important is it that NAFTA support further integration of North | 206 | 1.801 | |

| | | | | |
|-----|--|-----|-------|--|
| | American energy markets and the infrastructure needed to connect them? | | | |
| 8. | 8. Express Delivery - How important is it that NAFTA includes modern provisions to facilitate cross-border express delivery for small shipments? | 211 | 1.744 | |
| 9. | 9. Intellectual Property - Should NAFTA increase protection of intellectual property? | 204 | 2.172 | |
| 10. | 10. NAFTA Professionals List - How important is it to update NAFTA labor categories to reflect modern classifications of employment? | 204 | 2.118 | |
| 11. | 11. North American Single Window - How important is it to finalize cross-border data sharing and harmonization into a single window for import/export? | 207 | 1.797 | |
| 12. | 12. Regulatory Cooperation - How important is it to encourage expansion and permanent adoption of the Regulatory Cooperation Council, to align product standards, testing and certification? | 206 | 1.675 | |
| 13. | 13. Skills Certification Standards - How important is it to encourage mutual recognition of skills certifications standards across borders? | 208 | 1.837 | |

| | | | | |
|-----|--|---------|--------------|--|
| 14. | 14. Softwood Lumber - How important is it that a modernized NAFTA include a solution to softwood lumber? | 205 | 2.244 | |
| 15. | 15. Dairy and Poultry - How important is it that a modernized NAFTA address the issues related to dairy and poultry? | 204 | 2.186 | |
| | | Average | 1.957 | |
| | | | | |

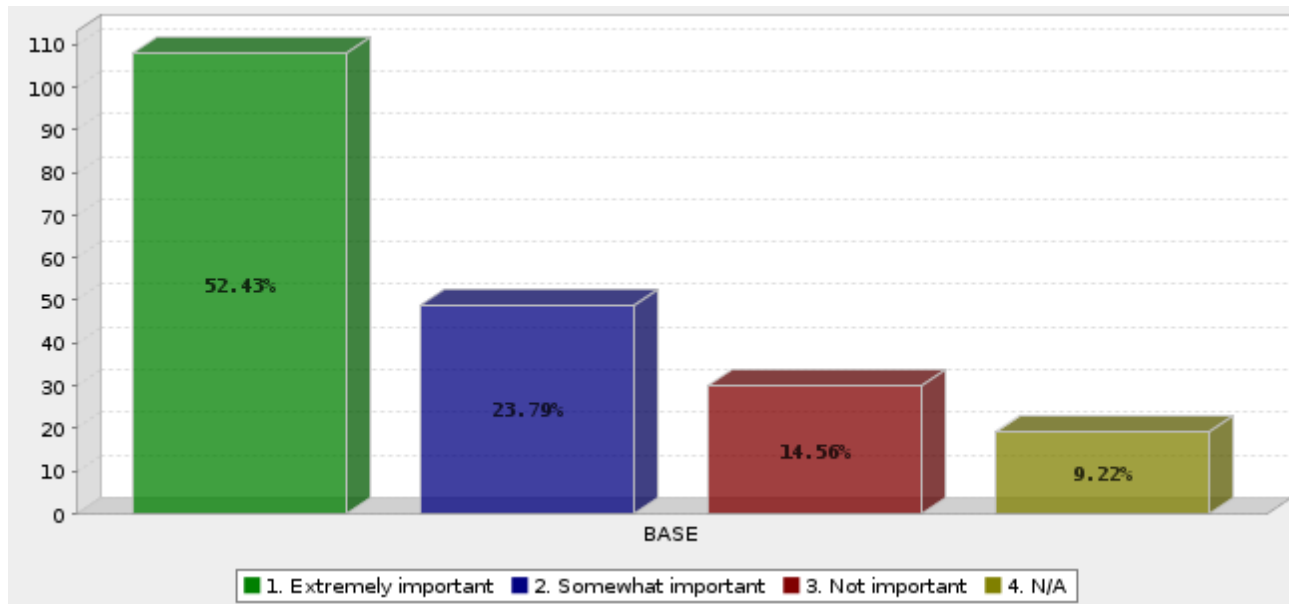
Q9. 1. Advances from other Free Trade Agreements (FTAs) - Review recent FTAs, such as TPP, to adopt modernized provisions, in such areas as simplified rules of origin, importer self-certification, trade facilitation, enforcement, supply chain security, non-tariff trade barriers, etc.



| | Answer | Count | Percent | |
|----|---------------------|--------------|----------------|--|
| 1. | Extremely important | 105 | 51.22% | |

| | | | | |
|---------------------|--|-----|-----------------------------------|-------------------------------|
| 2. | Somewhat important | 62 | 30.24% | |
| 3. | Not important | 19 | 9.27% | |
| 4. | N/A | 19 | 9.27% | |
| | Total | 205 | 100% | |
| Mean : 1.766 | Confidence Interval @ 95% : [1.634 - 1.898] | | Standard Deviation : 0.962 | |
| | | | | Standard Error : 0.067 |

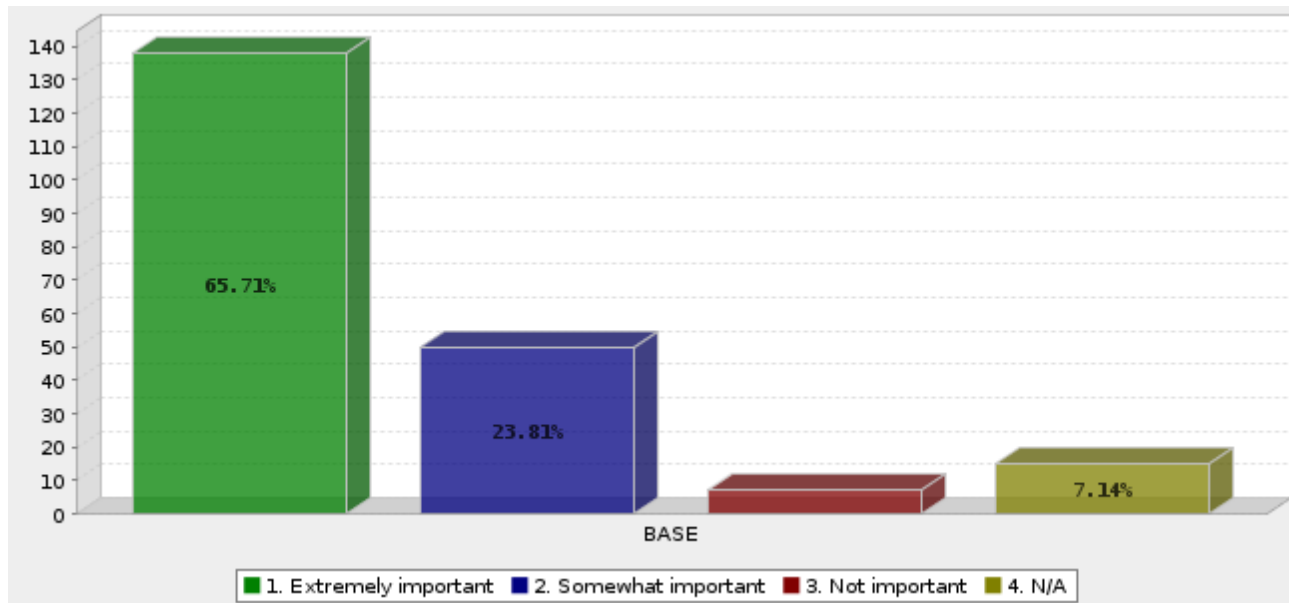
Q9. 2. Buy America - How important is it that Canada be considered "domestic" for the purpose of U.S. federal procurement, as it currently is in the defense sector?



| | Answer | Count | Percent | |
|----|---------------------|-------|---------|--|
| 1. | Extremely important | 108 | 52.43% | |
| 2. | Somewhat important | 49 | 23.79% | |
| 3. | Not important | 30 | 14.56% | |
| 4. | N/A | 19 | 9.22% | |

| | | | | |
|------------------------|---|-----|-----------------------------------|----------------------------------|
| | Total | 206 | 100% | |
| Mean : 1.806 | Confidence Interval @ 95% : [1.669 - 1.943] | | Standard Deviation : 1.003 | Standard Error : 0.070 |

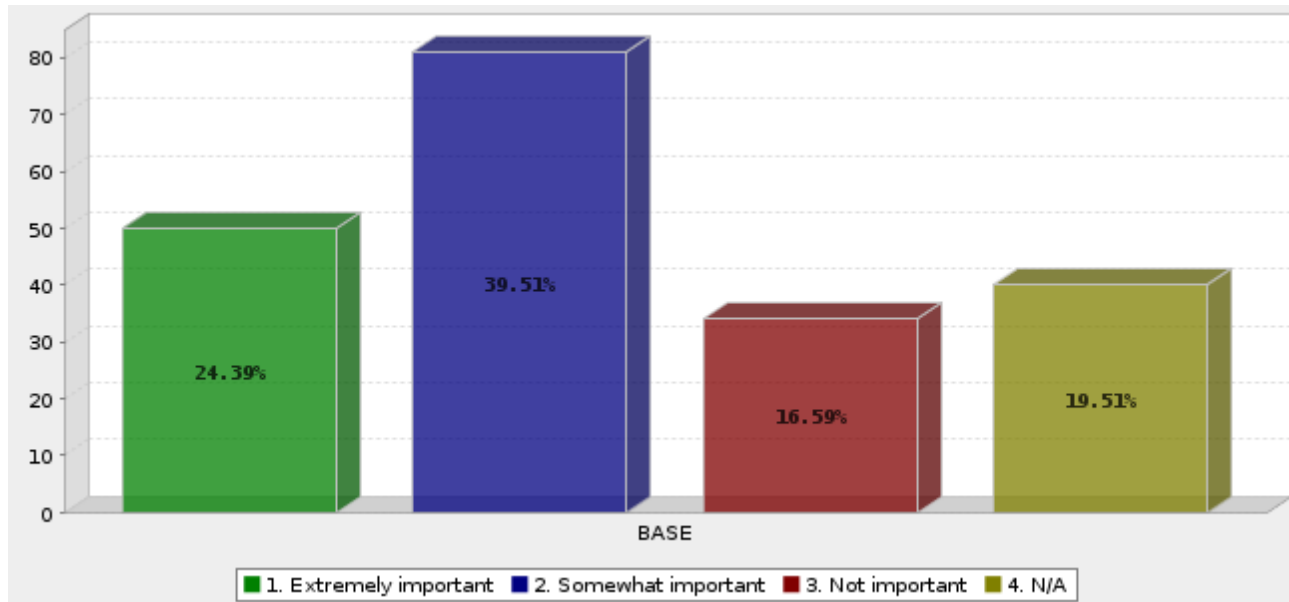
Q9. 3. Cross-border Trade Facilitation - Should opportunities for trade facilitation and cross-border movement of goods through such efforts as preclearance, expanded border crossing capacity, etc. be encouraged?



| | Answer | Count | Percent | |
|----|---------------------|-------|---------|--|
| 1. | Extremely important | 138 | 65.71% | |
| 2. | Somewhat important | 50 | 23.81% | |

| | | | | |
|------------------------|--|-----|-----------------------------------|----------------------------------|
| 3. | Not important | 7 | 3.33% | |
| 4. | N/A | 15 | 7.14% | |
| | Total | 210 | 100% | |
| Mean : 1.519 | Confidence Interval @ 95% : [1.402 - 1.636] | | Standard Deviation : 0.865 | Standard Error : 0.060 |

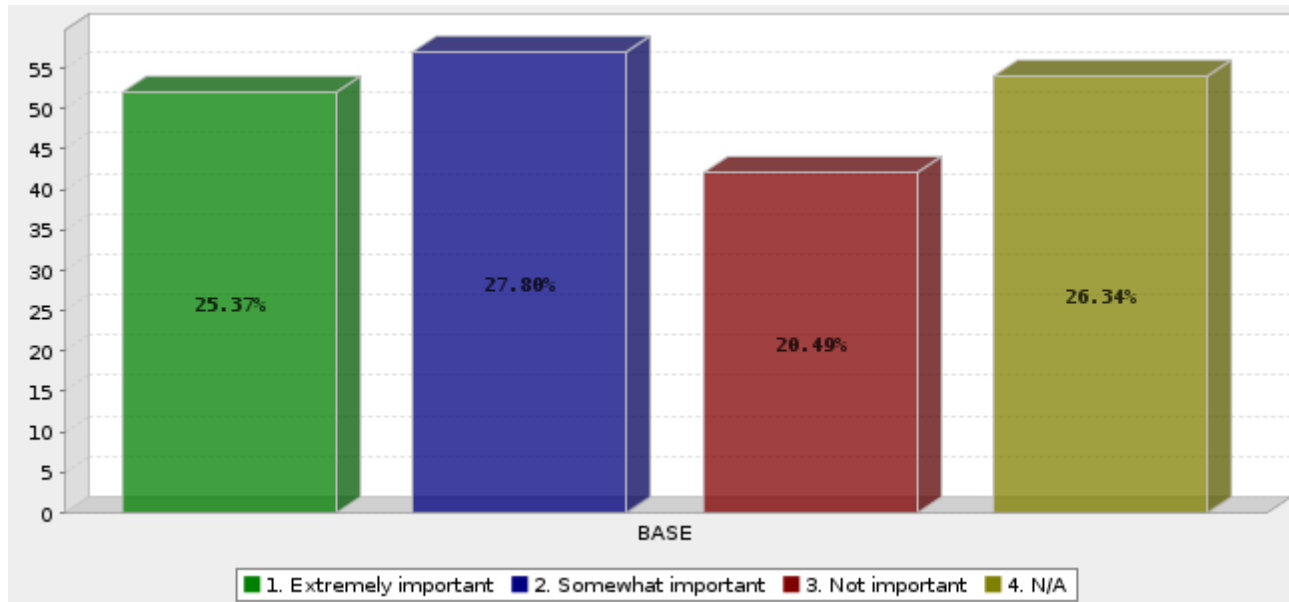
Q9. 4. De Minimis Value for Expedited International Shipment - The de minimis threshold for the U.S. is \$800, \$20 for Canada, and \$300 for Mexico. How important is it that these thresholds be aligned?



| | Answer | Count | Percent | |
|----|---------------------|-------|---------|--|
| 1. | Extremely important | 50 | 24.39% | |
| 2. | Somewhat important | 81 | 39.51% | |
| 3. | Not important | 34 | 16.59% | |
| 4. | N/A | 40 | 19.51% | |

| | | | | |
|------------------------|--|-----|-----------------------------------|-------------------------------------|
| | Total | 205 | 100% | |
| Mean : 2.312 | Confidence Interval @ 95% : [2.169 - 2.456] | | Standard Deviation : 1.048 | Standard Error : 0.073 |

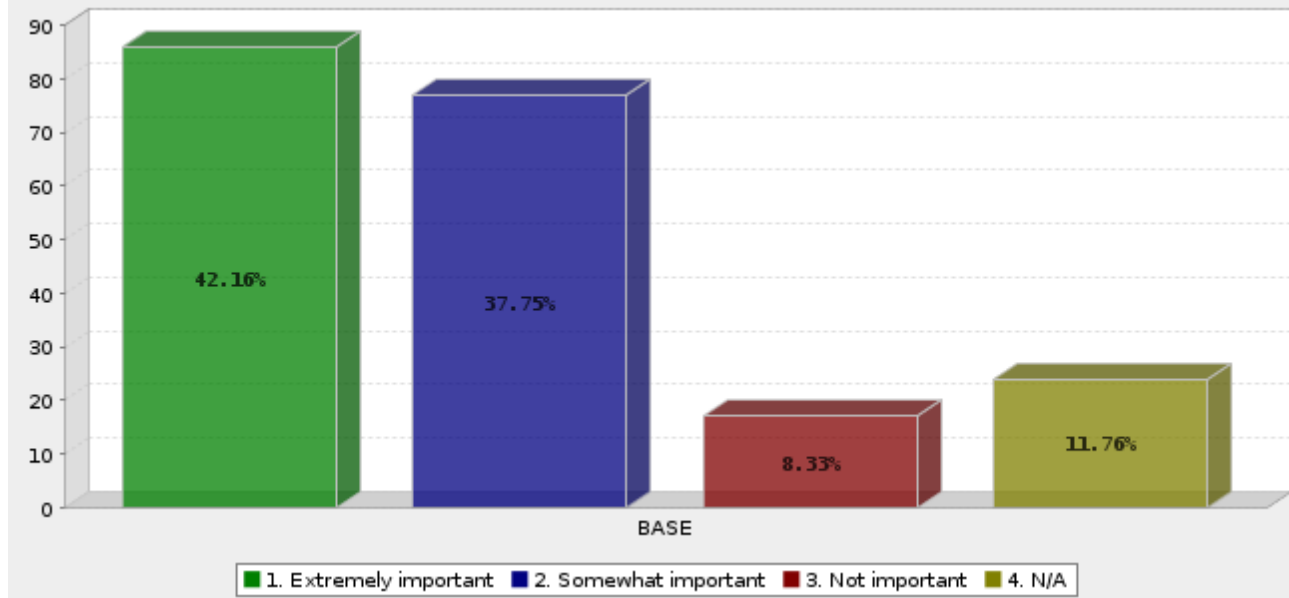
Q9. 5. Digital Trade - Should a framework to promote and govern digital trade (digital goods and services, for example, software, music, films, games, etc.) be established?



| | Answer | Count | Percent | |
|----|---------------------|-------|---------|--|
| 1. | Extremely important | 52 | 25.37% | |
| 2. | Somewhat important | 57 | 27.80% | |
| 3. | Not important | 42 | 20.49% | |
| 4. | N/A | 54 | 26.34% | |

| | | | | |
|------------------------|---|-----|-----------------------------------|----------------------------------|
| | Total | 205 | 100% | |
| Mean : 2.478 | Confidence Interval @ 95% : [2.323 - 2.634] | | Standard Deviation : 1.136 | Standard Error : 0.079 |

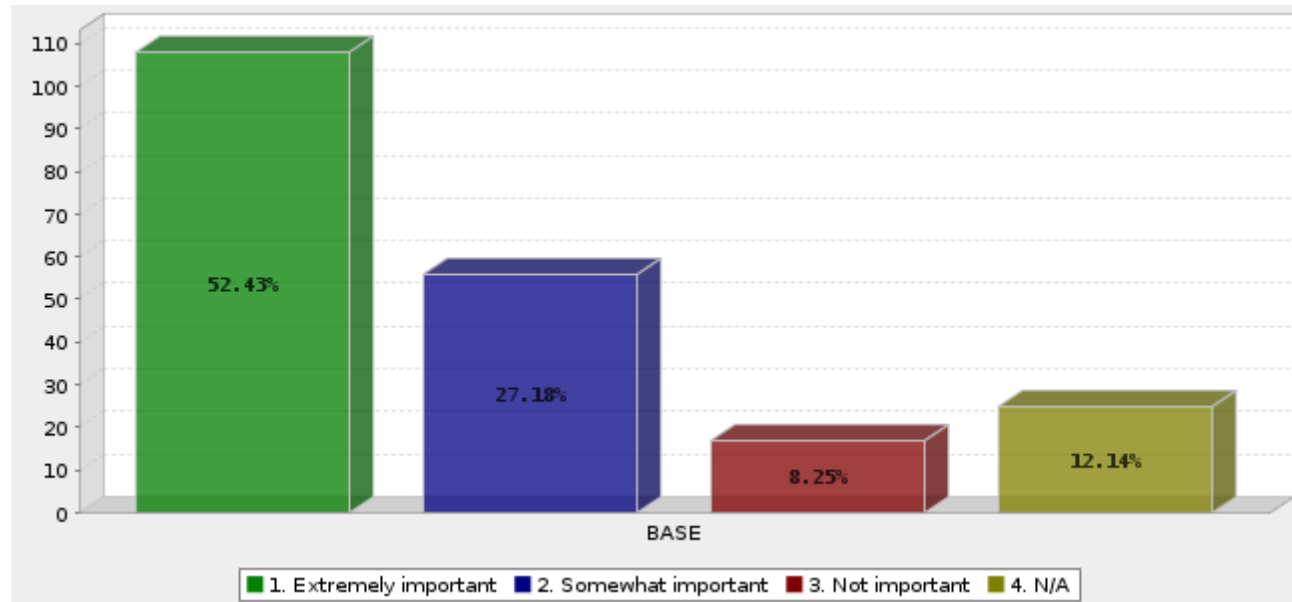
Q9. 6. E-commerce - How important are modernized regulations on e-commerce?



| | Answer | Count | Percent | |
|----|---------------------|-------|---------|--|
| 1. | Extremely important | 86 | 42.16% | |
| 2. | Somewhat important | 77 | 37.75% | |
| 3. | Not important | 17 | 8.33% | |
| 4. | N/A | 24 | 11.76% | |
| | Total | 204 | 100% | |

| | | | |
|------------------------|--|-----------------------------------|-------------------------------------|
| Mean : 1.897 | Confidence Interval @ 95% : [1.762 - 2.032] | Standard Deviation : 0.985 | Standard Error : 0.069 |
|------------------------|--|-----------------------------------|-------------------------------------|

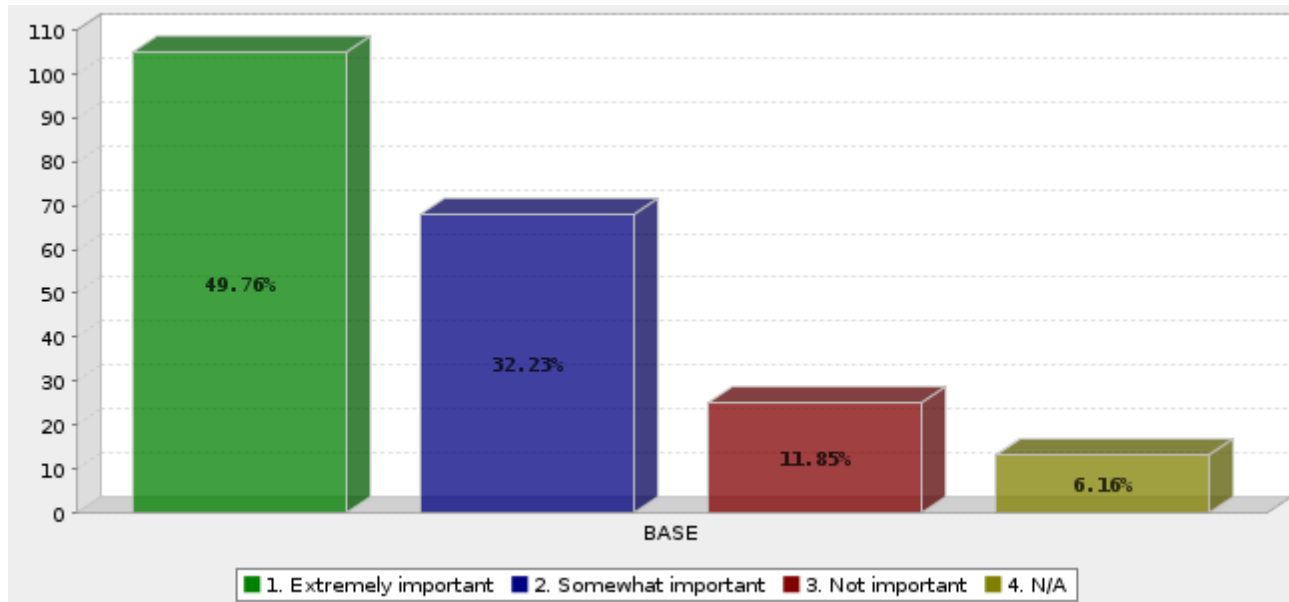
Q9. 7. Energy and Infrastructure - How important is it that NAFTA support further integration of North American energy markets and the infrastructure needed to connect them?



| | Answer | Count | Percent | |
|----|---------------------|-------|---------|--|
| 1. | Extremely important | 108 | 52.43% | |
| 2. | Somewhat important | 56 | 27.18% | |
| 3. | Not important | 17 | 8.25% | |
| 4. | N/A | 25 | 12.14% | |

| | | | | |
|------------------------|---|-----|-----------------------------------|----------------------------------|
| | Total | 206 | 100% | |
| Mean : 1.801 | Confidence Interval @ 95% : [1.661 - 1.941] | | Standard Deviation : 1.028 | Standard Error : 0.072 |

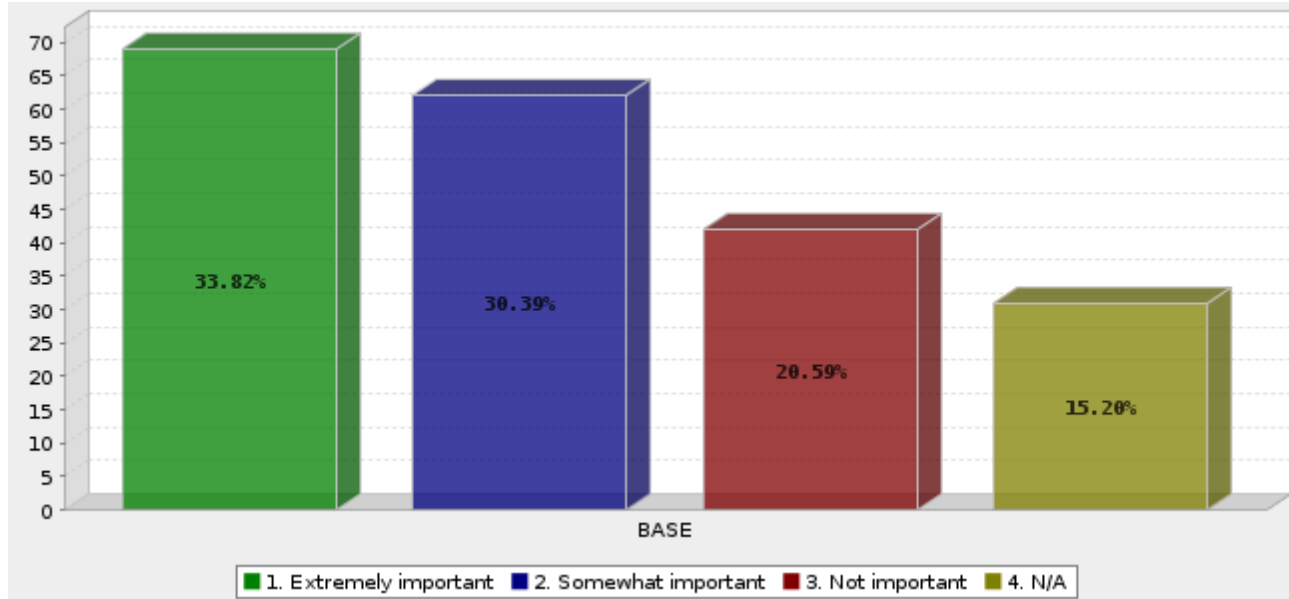
Q9. 8. Express Delivery - How important is it that NAFTA includes modern provisions to facilitate cross-border express delivery for small shipments?



| | Answer | Count | Percent | |
|----|---------------------|-------|---------|--|
| 1. | Extremely important | 105 | 49.76% | |
| 2. | Somewhat important | 68 | 32.23% | |
| 3. | Not important | 25 | 11.85% | |
| 4. | N/A | 13 | 6.16% | |

| | | | | |
|------------------------|--|-----|-----------------------------------|-------------------------------------|
| | Total | 211 | 100% | |
| Mean : 1.744 | Confidence Interval @ 95% : [1.623 - 1.865] | | Standard Deviation : 0.895 | Standard Error : 0.062 |

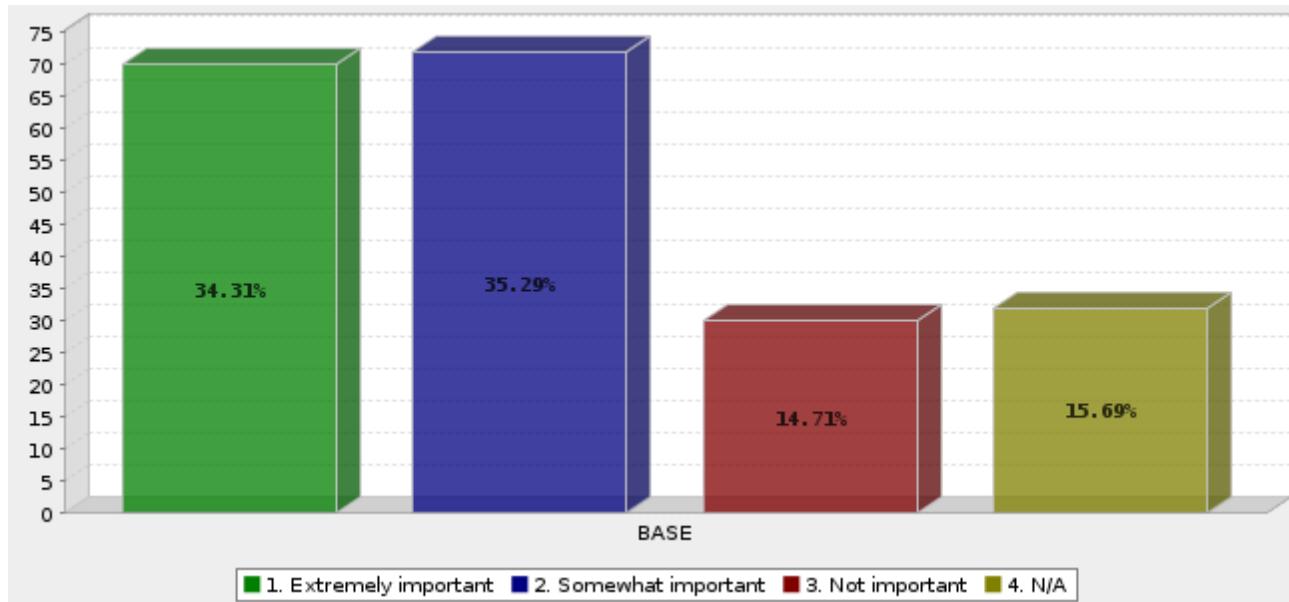
Q9. 9. Intellectual Property - Should NAFTA increase protection of intellectual property?



| | Answer | Count | Percent | |
|----|---------------------|-------|---------|--|
| 1. | Extremely important | 69 | 33.82% | |
| 2. | Somewhat important | 62 | 30.39% | |
| 3. | Not important | 42 | 20.59% | |
| 4. | N/A | 31 | 15.20% | |
| | Total | 204 | 100% | |

| | | | |
|------------------------|--|-----------------------------------|-------------------------------------|
| Mean : 2.172 | Confidence Interval @ 95% : [2.026 - 2.317] | Standard Deviation : 1.062 | Standard Error : 0.074 |
|------------------------|--|-----------------------------------|-------------------------------------|

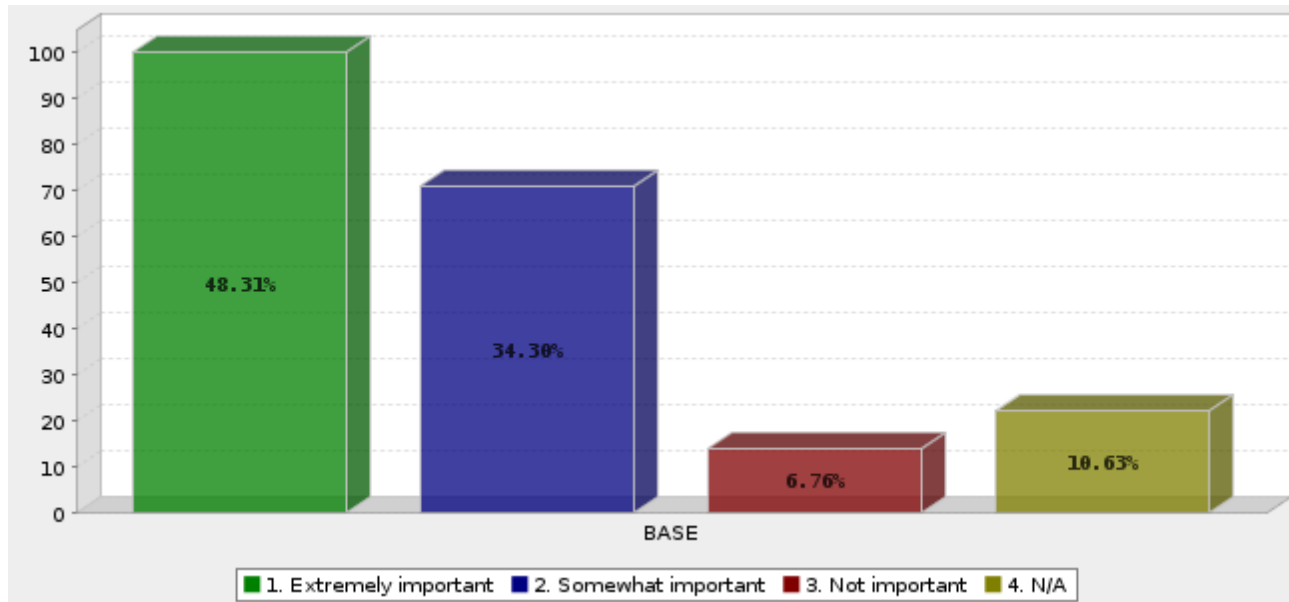
Q9. 10. NAFTA Professionals List - How important is it to update NAFTA labor categories to reflect modern classifications of employment?



| | Answer | Count | Percent | |
|----|---------------------|-------|---------|--|
| 1. | Extremely important | 70 | 34.31% | |
| 2. | Somewhat important | 72 | 35.29% | |
| 3. | Not important | 30 | 14.71% | |
| 4. | N/A | 32 | 15.69% | |

| | | | | |
|------------------------|---|-----|-----------------------------------|----------------------------------|
| | Total | 204 | 100% | |
| Mean : 2.118 | Confidence Interval @ 95% : [1.973 - 2.262] | | Standard Deviation : 1.053 | Standard Error : 0.074 |

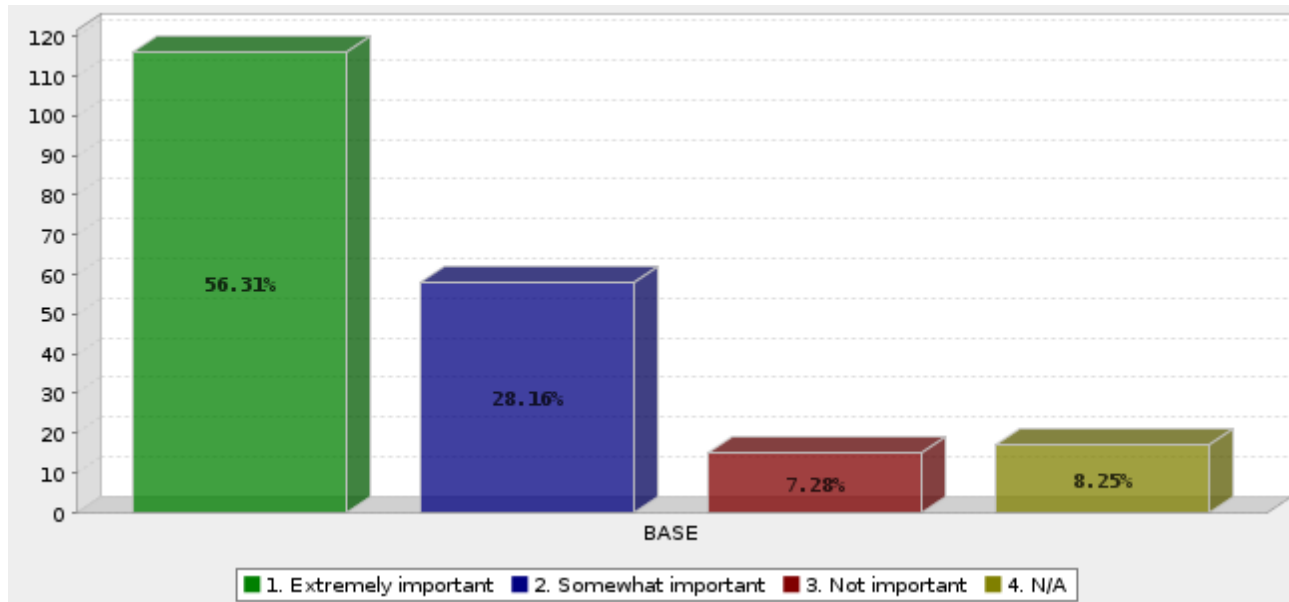
Q9. 11. North American Single Window - How important is it to finalize cross-border data sharing and harmonization into a single window for import/export?



| | Answer | Count | Percent | |
|----|---------------------|-------|---------|--|
| 1. | Extremely important | 100 | 48.31% | |
| 2. | Somewhat important | 71 | 34.30% | |
| 3. | Not important | 14 | 6.76% | |
| 4. | N/A | 22 | 10.63% | |

| | | | | |
|------------------------|--|-----|-----------------------------------|-------------------------------------|
| | Total | 207 | 100% | |
| Mean : 1.797 | Confidence Interval @ 95% : [1.665 - 1.929] | | Standard Deviation : 0.969 | Standard Error : 0.067 |

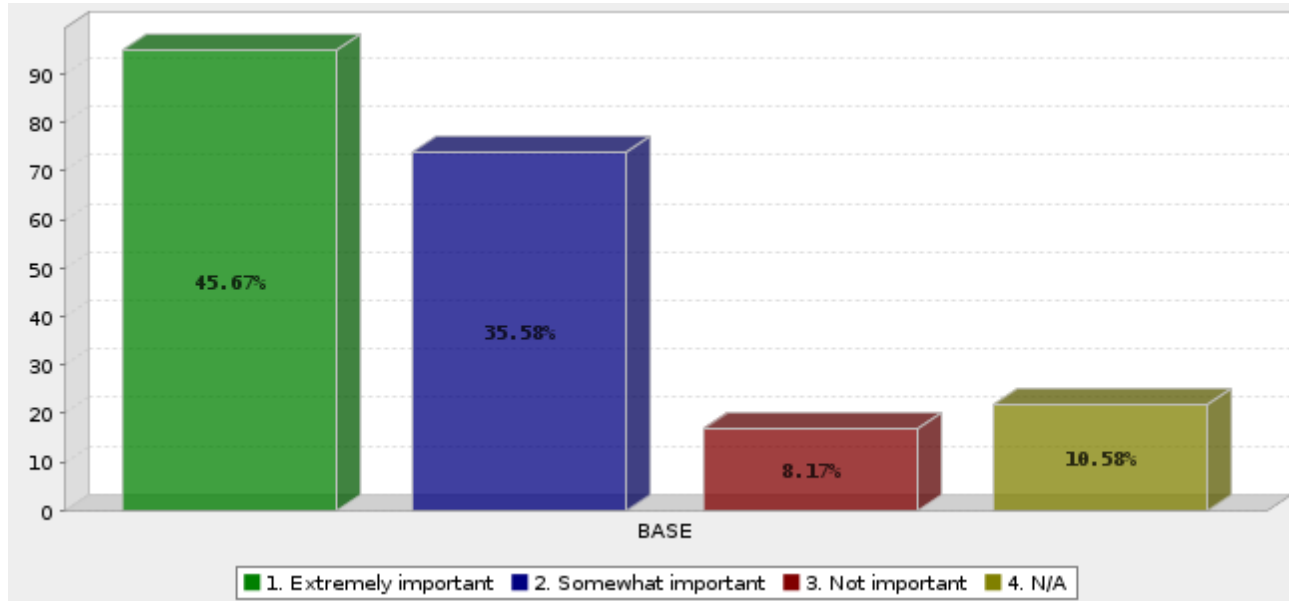
Q9. 12. Regulatory Cooperation - How important is it to encourage expansion and permanent adoption of the Regulatory Cooperation Council, to align product standards, testing and certification?



| | Answer | Count | Percent | |
|----|---------------------|-------|---------|--|
| 1. | Extremely important | 116 | 56.31% | |
| 2. | Somewhat important | 58 | 28.16% | |
| 3. | Not important | 15 | 7.28% | |
| 4. | N/A | 17 | 8.25% | |

| | | | | |
|------------------------|--|-----|-----------------------------------|----------------------------------|
| | Total | 206 | 100% | |
| Mean : 1.675 | Confidence Interval @ 95% : [1.548 - 1.802] | | Standard Deviation : 0.930 | Standard Error : 0.065 |

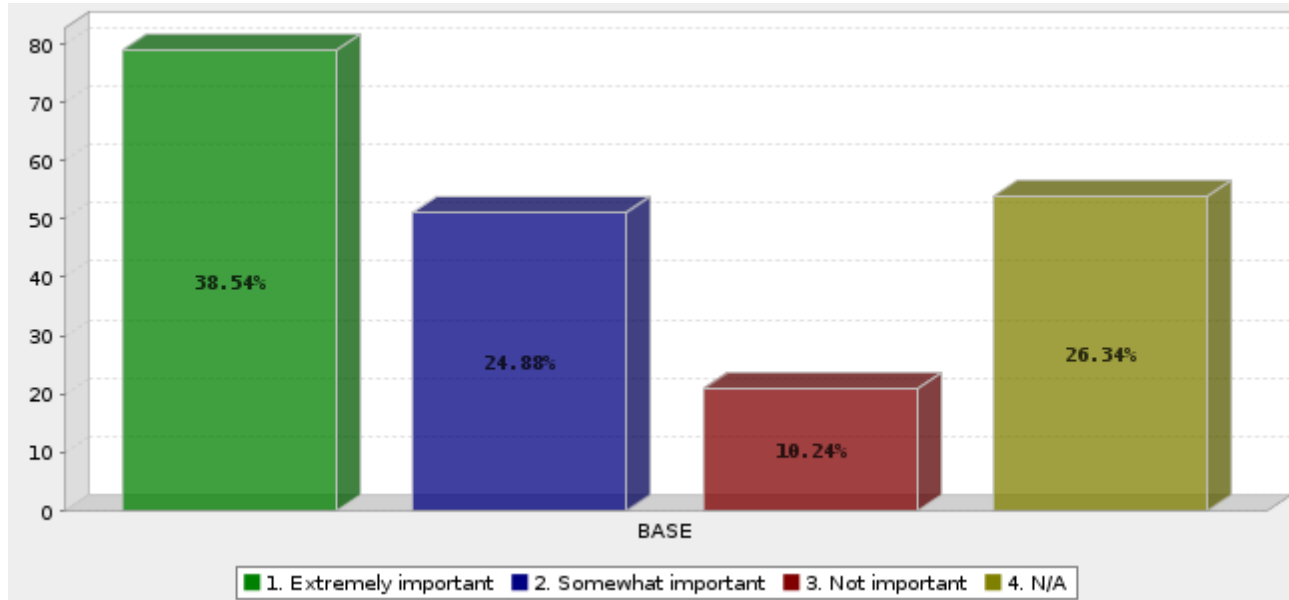
Q9. 13. Skills Certification Standards - How important is it to encourage mutual recognition of skills certifications standards across borders?



| | Answer | Count | Percent | |
|----|---------------------|-------|---------|--|
| 1. | Extremely important | 95 | 45.67% | |
| 2. | Somewhat important | 74 | 35.58% | |
| 3. | Not important | 17 | 8.17% | |
| 4. | N/A | 22 | 10.58% | |
| | Total | 208 | 100% | |

| | | | |
|------------------------|--|-----------------------------------|-------------------------------------|
| Mean : 1.837 | Confidence Interval @ 95% : [1.705 - 1.968] | Standard Deviation : 0.969 | Standard Error : 0.067 |
|------------------------|--|-----------------------------------|-------------------------------------|

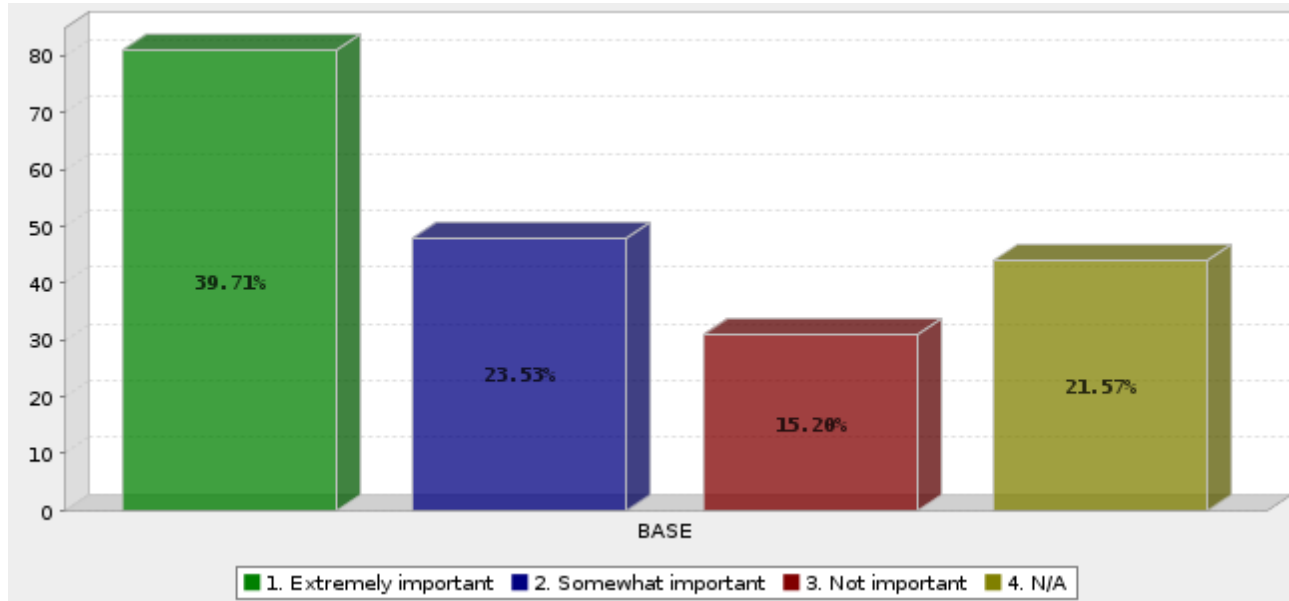
Q9. 14. Softwood Lumber - How important is it that a modernized NAFTA include a solution to softwood lumber?



| | Answer | Count | Percent | |
|----|---------------------|-------|---------|--|
| 1. | Extremely important | 79 | 38.54% | |
| 2. | Somewhat important | 51 | 24.88% | |
| 3. | Not important | 21 | 10.24% | |
| 4. | N/A | 54 | 26.34% | |
| | Total | 205 | 100% | |

| | | | |
|------------------------|--|-----------------------------------|-------------------------------------|
| Mean : 2.244 | Confidence Interval @ 95% : [2.077 - 2.411] | Standard Deviation : 1.220 | Standard Error : 0.085 |
|------------------------|--|-----------------------------------|-------------------------------------|

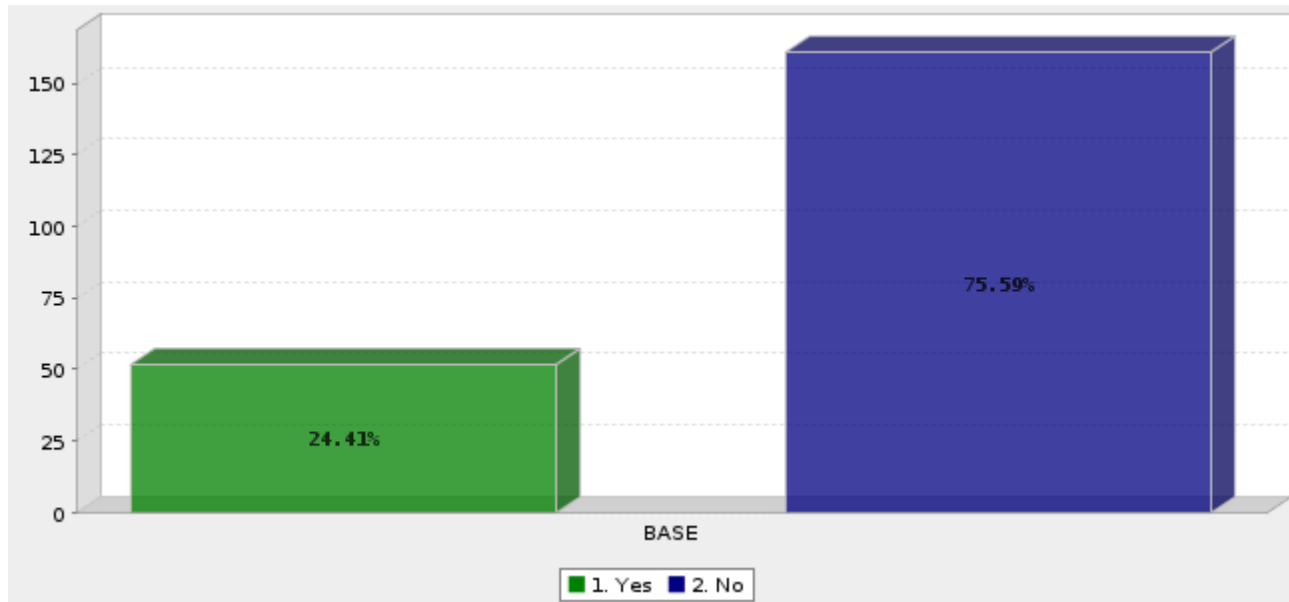
Q9. 15. Dairy and Poultry - How important is it that a modernized NAFTA address the issues related to dairy and poultry?



| | Answer | Count | Percent | |
|----|---------------------|-------|---------|--|
| 1. | Extremely important | 81 | 39.71% | |
| 2. | Somewhat important | 48 | 23.53% | |
| 3. | Not important | 31 | 15.20% | |
| 4. | N/A | 44 | 21.57% | |
| | Total | 204 | 100% | |

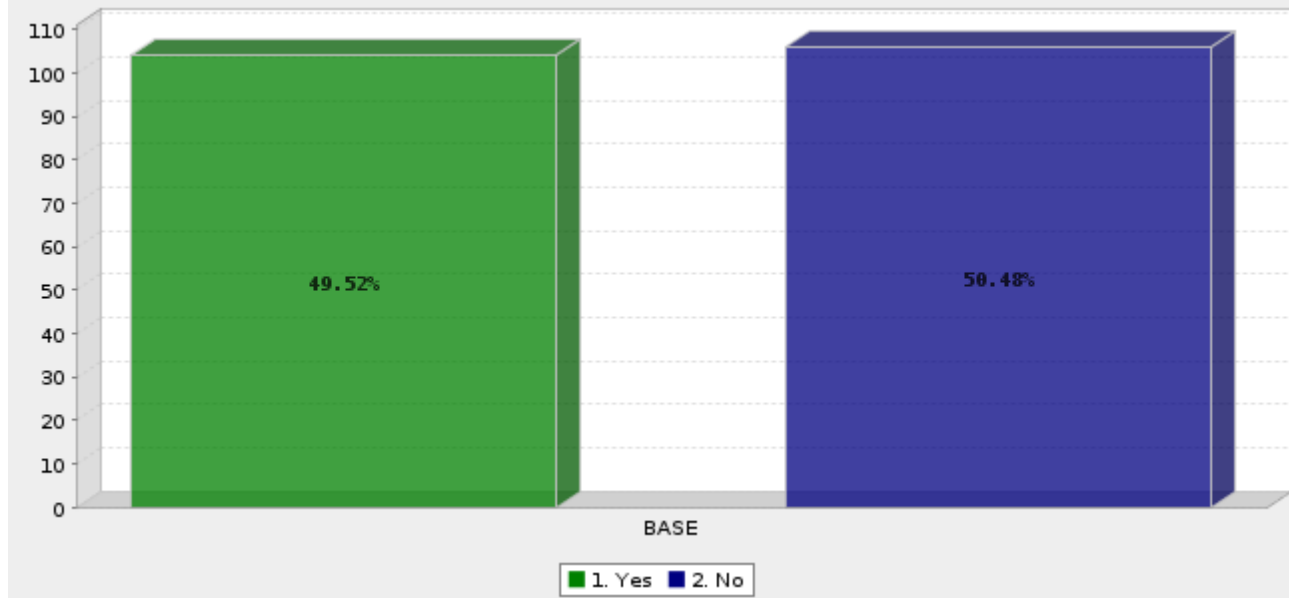
| | | | |
|------------------------|--|-----------------------------------|-------------------------------------|
| Mean : 2.186 | Confidence Interval @ 95% : [2.025 - 2.348] | Standard Deviation : 1.176 | Standard Error : 0.082 |
|------------------------|--|-----------------------------------|-------------------------------------|

Q15. Do you employ any foreign workers?



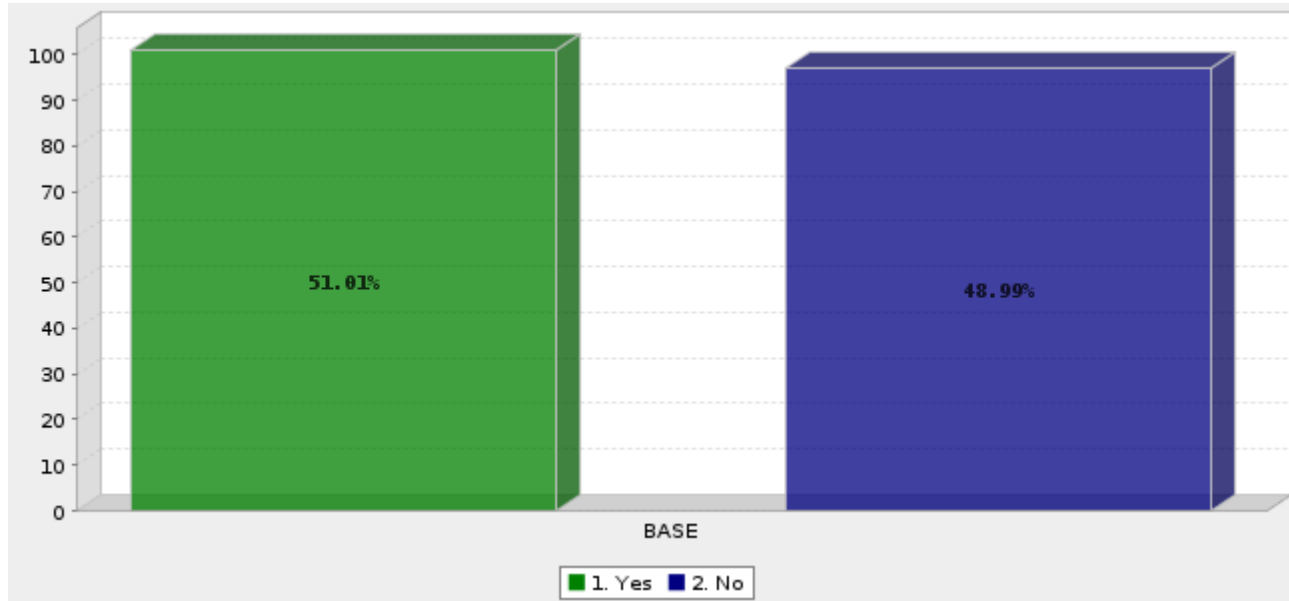
| | Answer | Count | Percent | |
|--------------|---|-------|----------------------------|------------------------|
| | 1. Yes | 52 | 24.41% | |
| | 2. No | 161 | 75.59% | |
| | Total | 213 | 100% | |
| Mean : 1.756 | Confidence Interval @ 95% : [1.698 - 1.814] | | Standard Deviation : 0.431 | |
| | | | | Standard Error : 0.030 |

Q17. Does your organization depend on bi-national supply chains between Canada, Mexico, or the U.S.?



| | Answer | Count | Percent | |
|---------------------|--|-------|-----------------------------------|-------------------------------|
| | 1. Yes | 104 | 49.52% | |
| | 2. No | 106 | 50.48% | |
| | Total | 210 | 100% | |
| Mean : 1.505 | Confidence Interval @ 95% : [1.437 - 1.573] | | Standard Deviation : 0.501 | Standard Error : 0.035 |

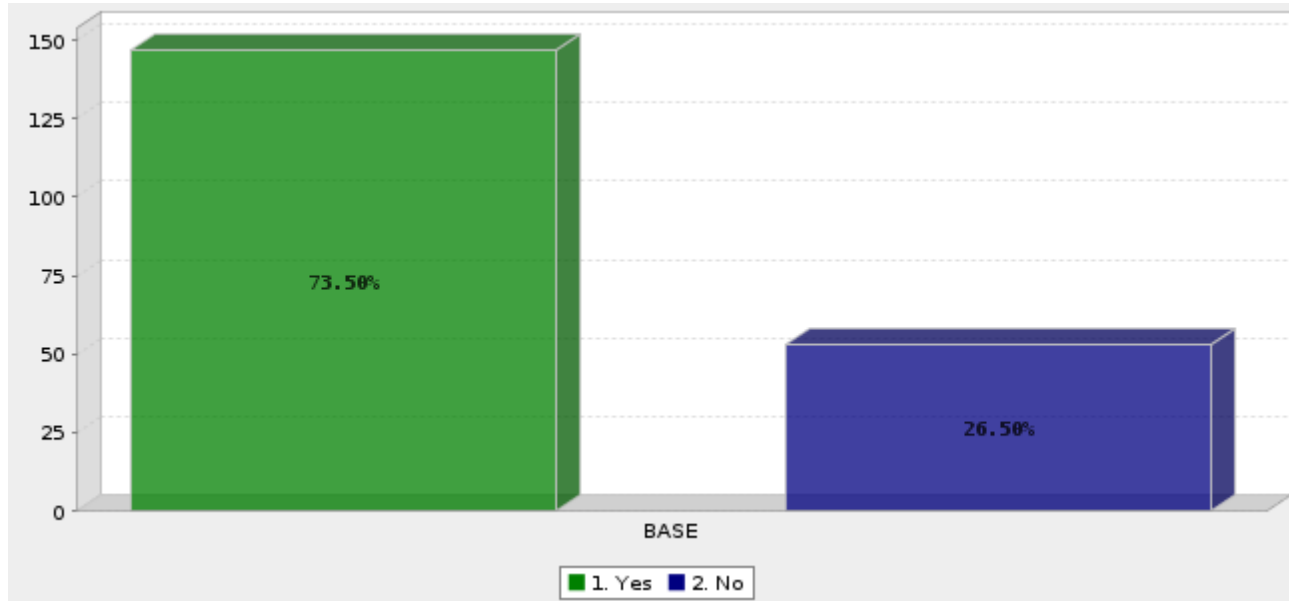
Q20. Would your organization be interested in reviewing and potentially endorsing a list of NAFTA recommendations developed by the Taskforce?



| | Answer | Count | Percent |
|--|--------|-------|---------|
| | 1. Yes | 101 | 51.01% |
| | 2. No | 97 | 48.99% |
| | Total | 198 | 100% |

| | | | |
|---------------------|--|-----------------------------------|-------------------------------|
| Mean : 1.490 | Confidence Interval @ 95% : [1.420 - 1.560] | Standard Deviation : 0.501 | Standard Error : 0.036 |
|---------------------|--|-----------------------------------|-------------------------------|

Q21. Would you be interested in receiving the aggregated results of this survey?



| | Answer | Count | Percent | |
|--------------|---|-------|----------------------------|------------------------|
| | 1. Yes | 147 | 73.50% | |
| | 2. No | 53 | 26.50% | |
| | Total | 200 | 100% | |
| Mean : 1.265 | Confidence Interval @ 95% : [1.204 - 1.326] | | Standard Deviation : 0.442 | Standard Error : 0.031 |

