

Harmonization: Facilitating Commerce



Idaho Transportation Department Presentation to:

PNWER 2016

Moving Freight is Important







Your Safety. Your Mobility. Your Economic Opportunity.



FedEx

Ground

53587



Your Safety. Your Mobility. Your Economic Opportunity.

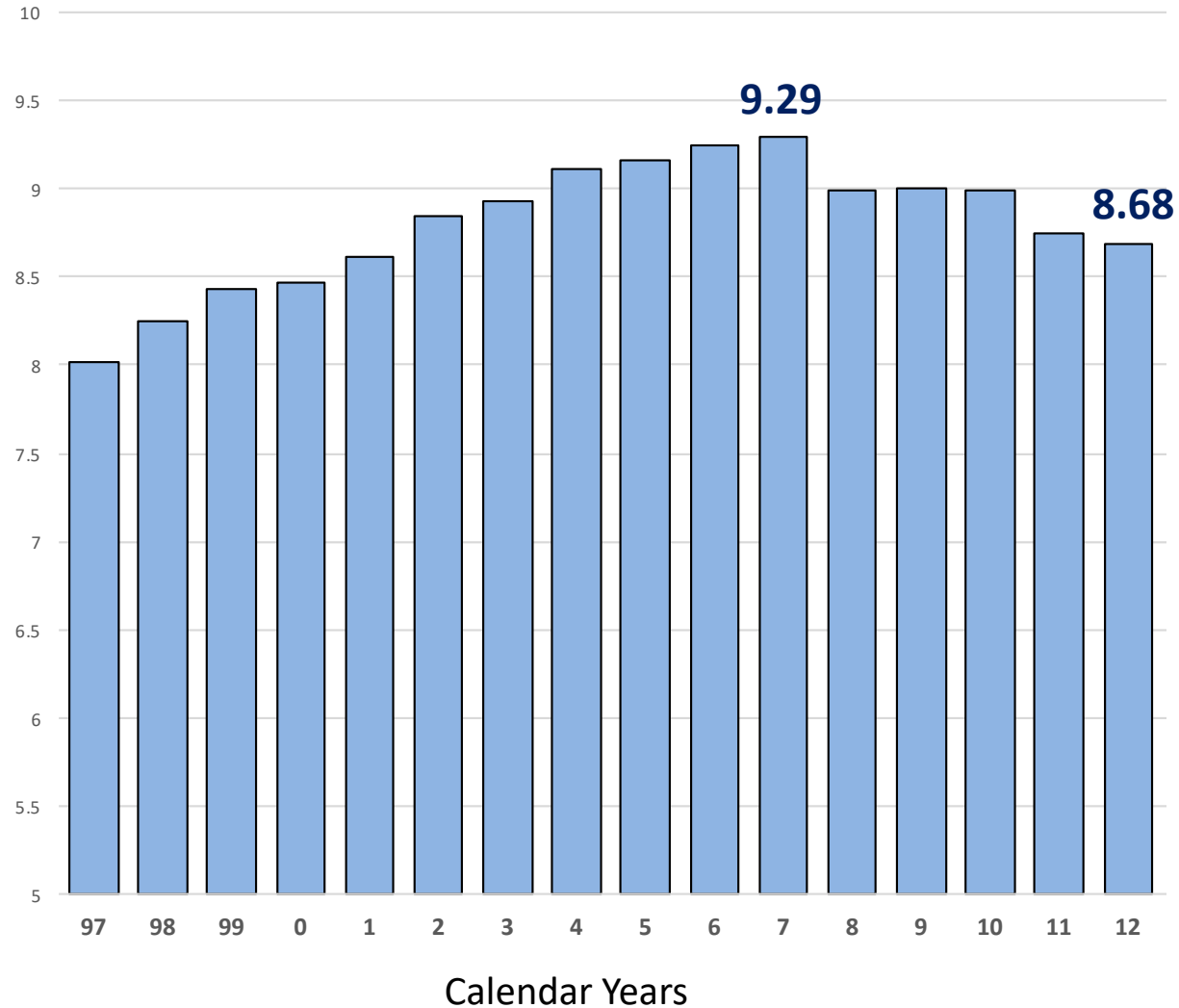
United States Interstate System, 1956



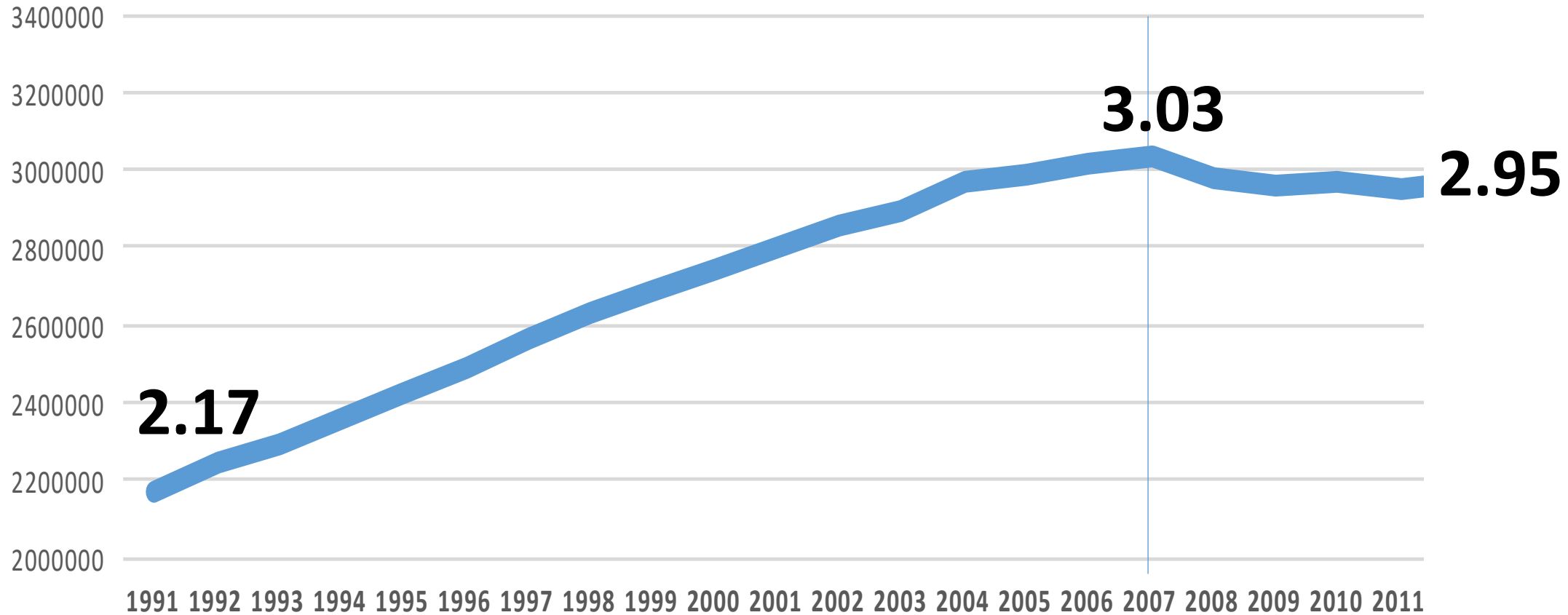
Your Safety. Your Mobility. Your Economic Opportunity.

Nationwide Gasoline Sales (U.S.)

(millions of barrels per day)



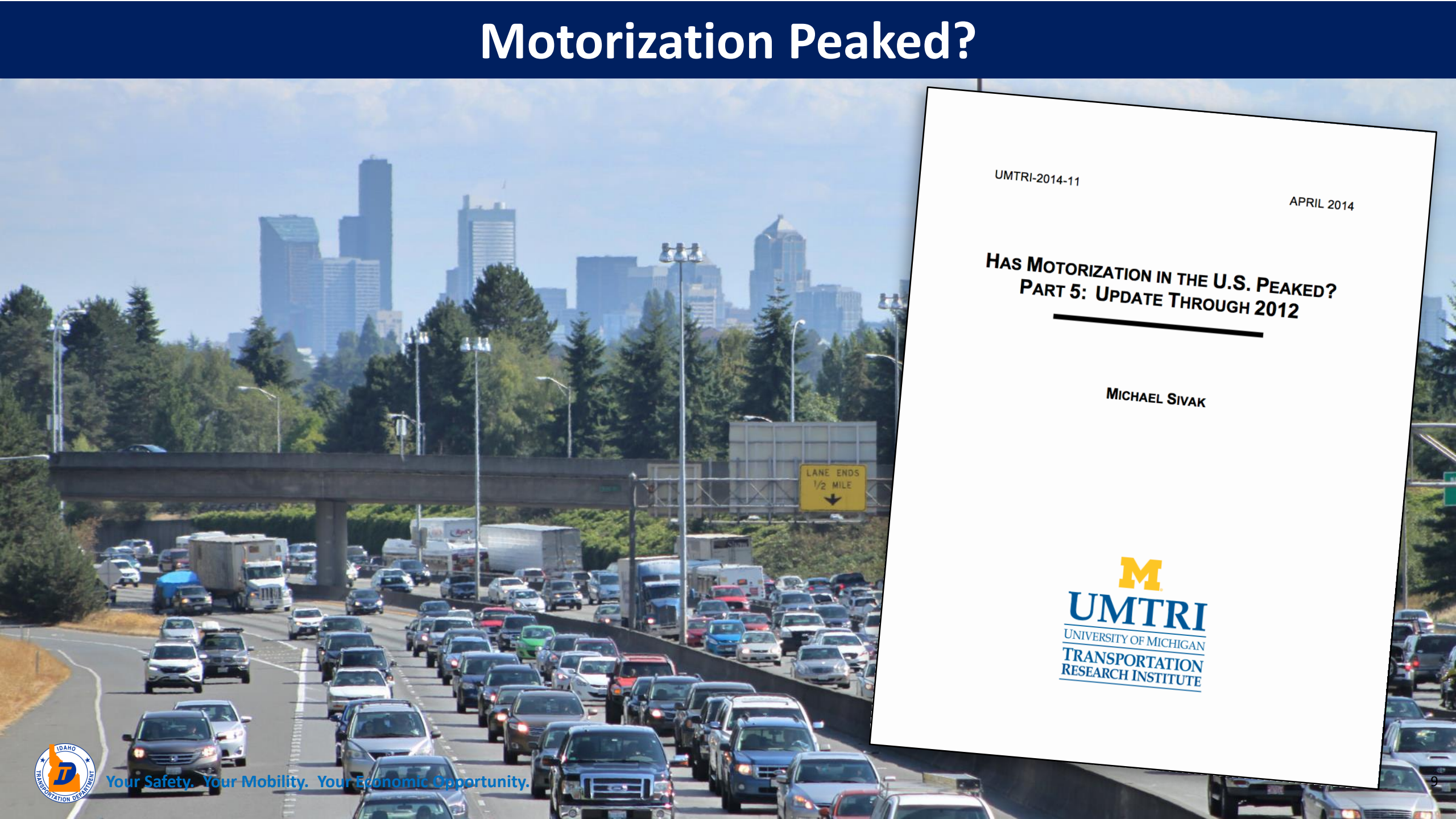
Annual Vehicle Miles of Travel in the U.S. (in trillions)



The western 13 states including Alaska and Hawaii led the nation with 61.6 billion miles traveled annually.



Motorization Peaked?



UMTRI-2014-11

APRIL 2014

HAS MOTORIZATION IN THE U.S. PEAKED? PART 5: UPDATE THROUGH 2012

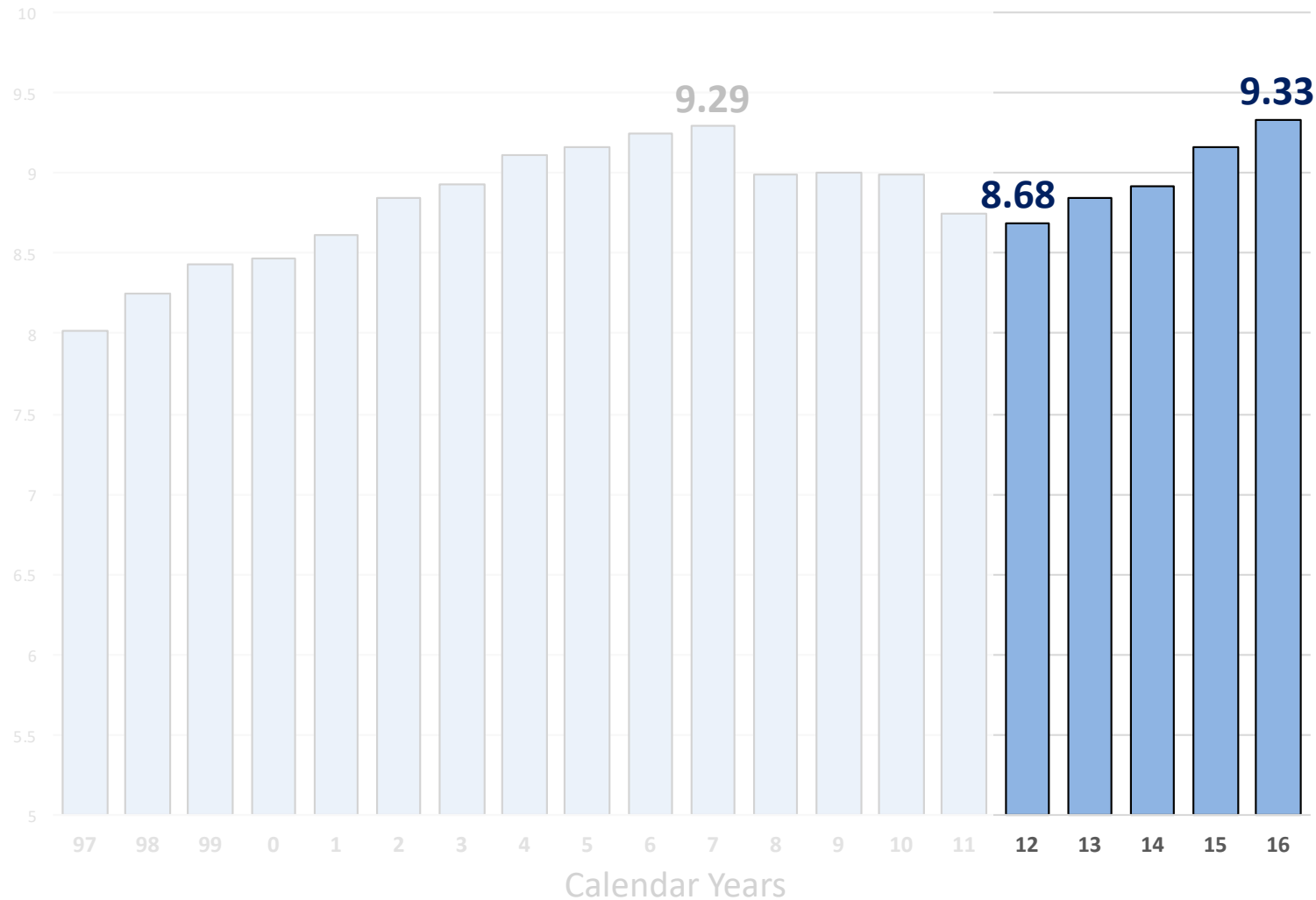
MICHAEL SIVAK



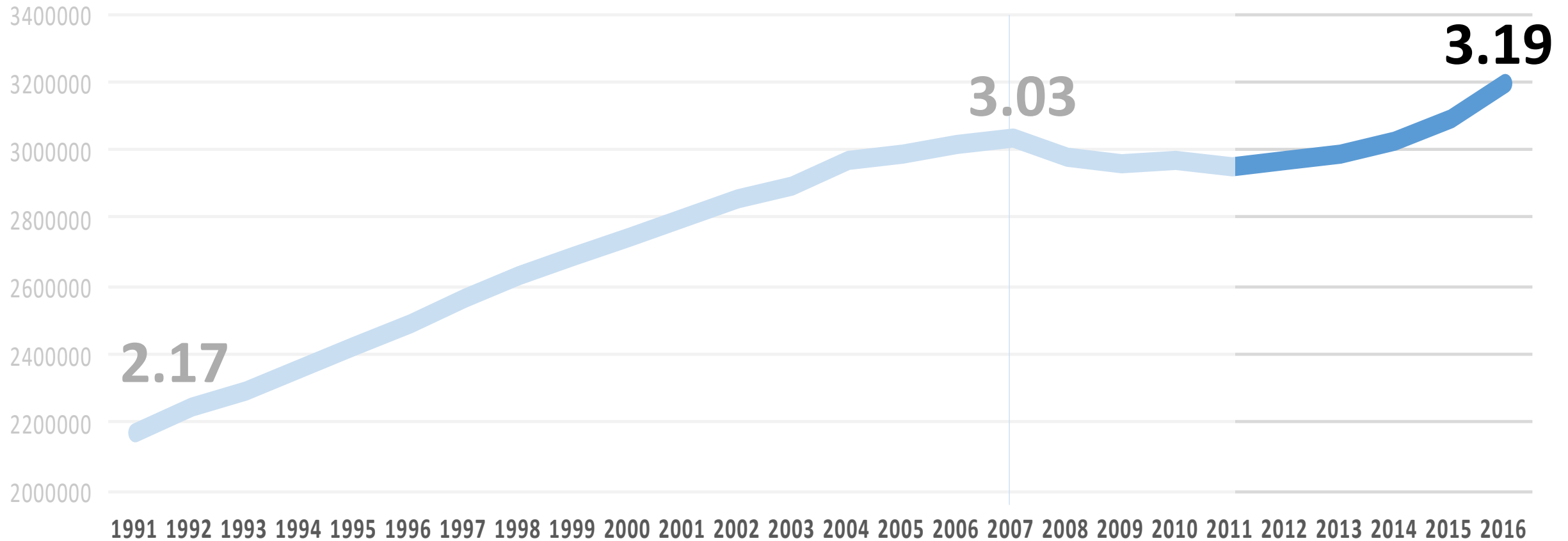
Your Safety. Your Mobility. Your Economic Opportunity.

Nationwide Gasoline Sales (U.S.)

(millions of barrels per day)



Annual Vehicle Miles of Travel in the U.S. (in trillions)

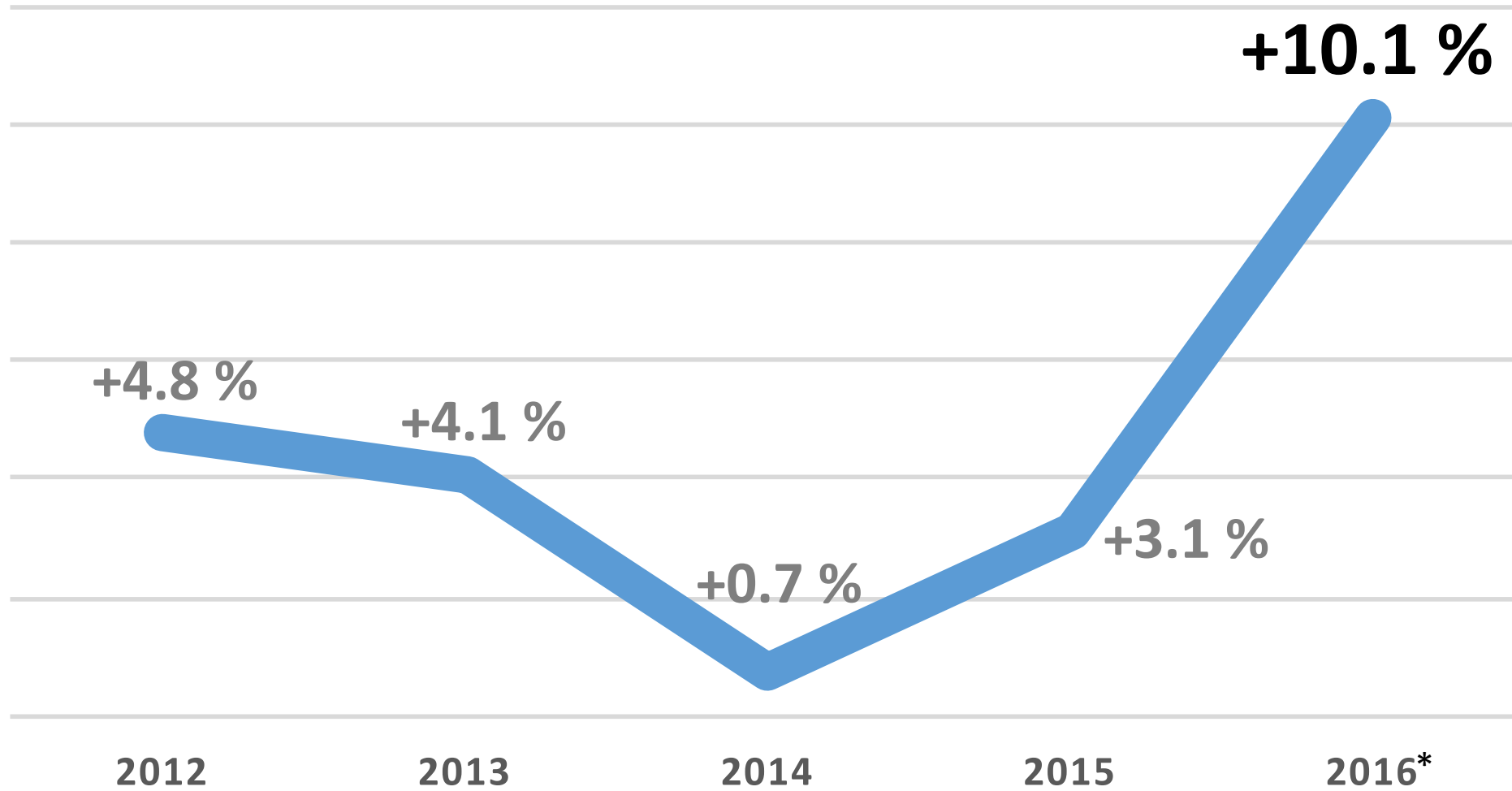


The western 13 states including Alaska and Hawaii led the nation with 61.6 billion miles traveled annually.



Traffic Growth on Idaho's Urban Interstates

(September comparison)



*Preliminary data



Recognizing the Increasing Demand for Mobility

Mobility Trends:

- Exceeded the 2007 peak on gas
- Near peak on diesel
- Traffic counts are up 10%



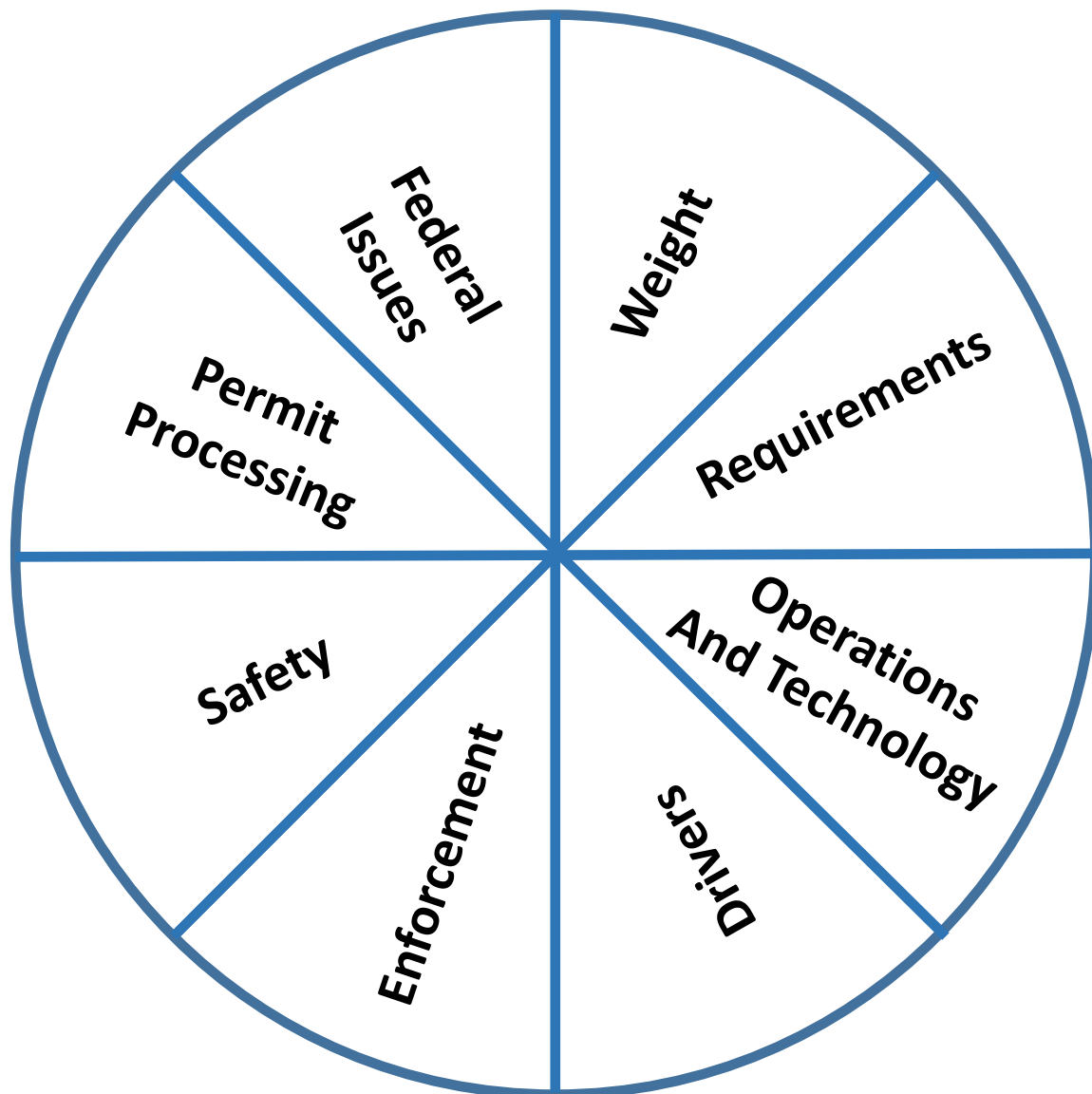
Harmonization:

- Removing Restrictions
- Growing the economy

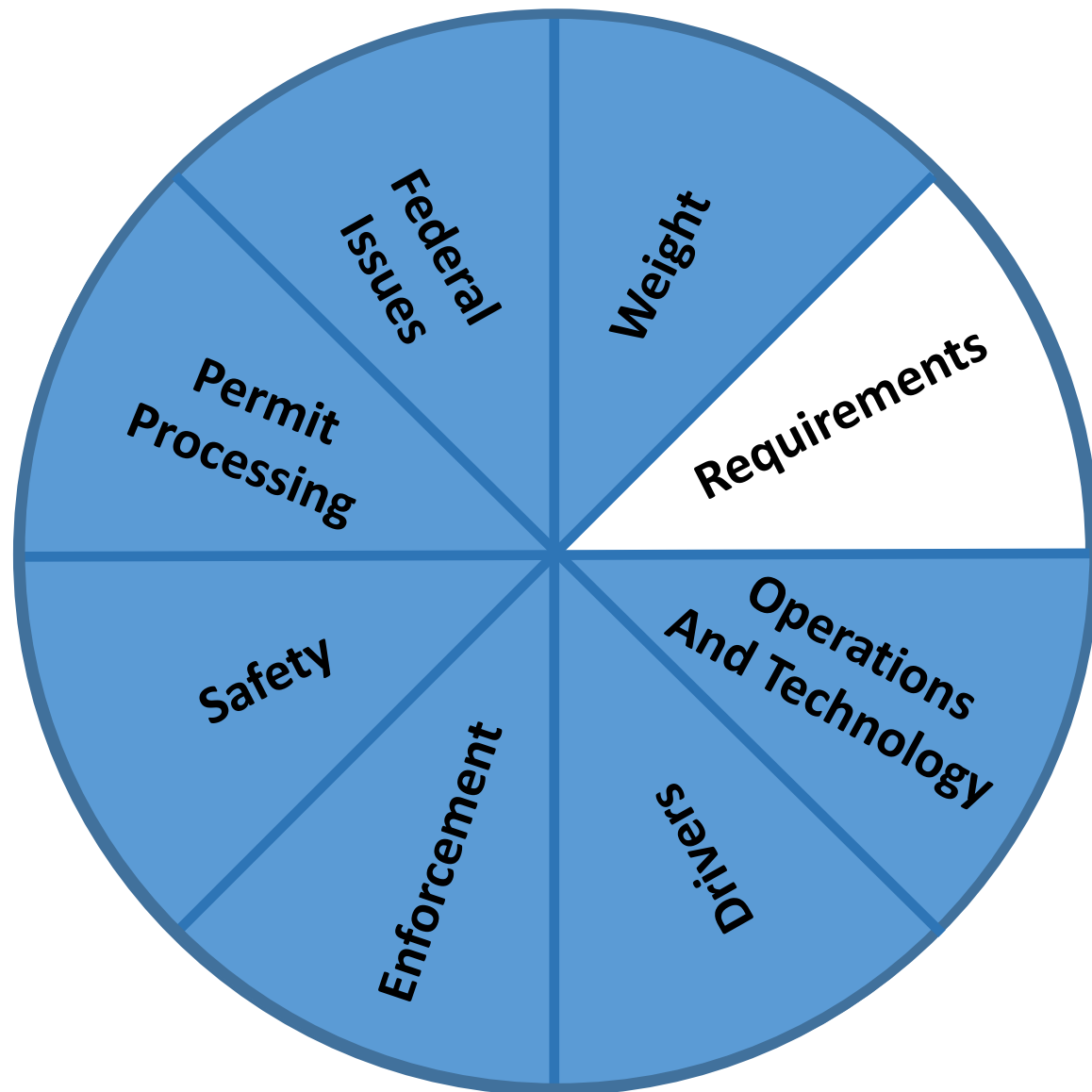


Your Safety. Your Mobility. Your Economic Opportunity.

Harmonization Factors for Mobility



Harmonization Factors for Mobility

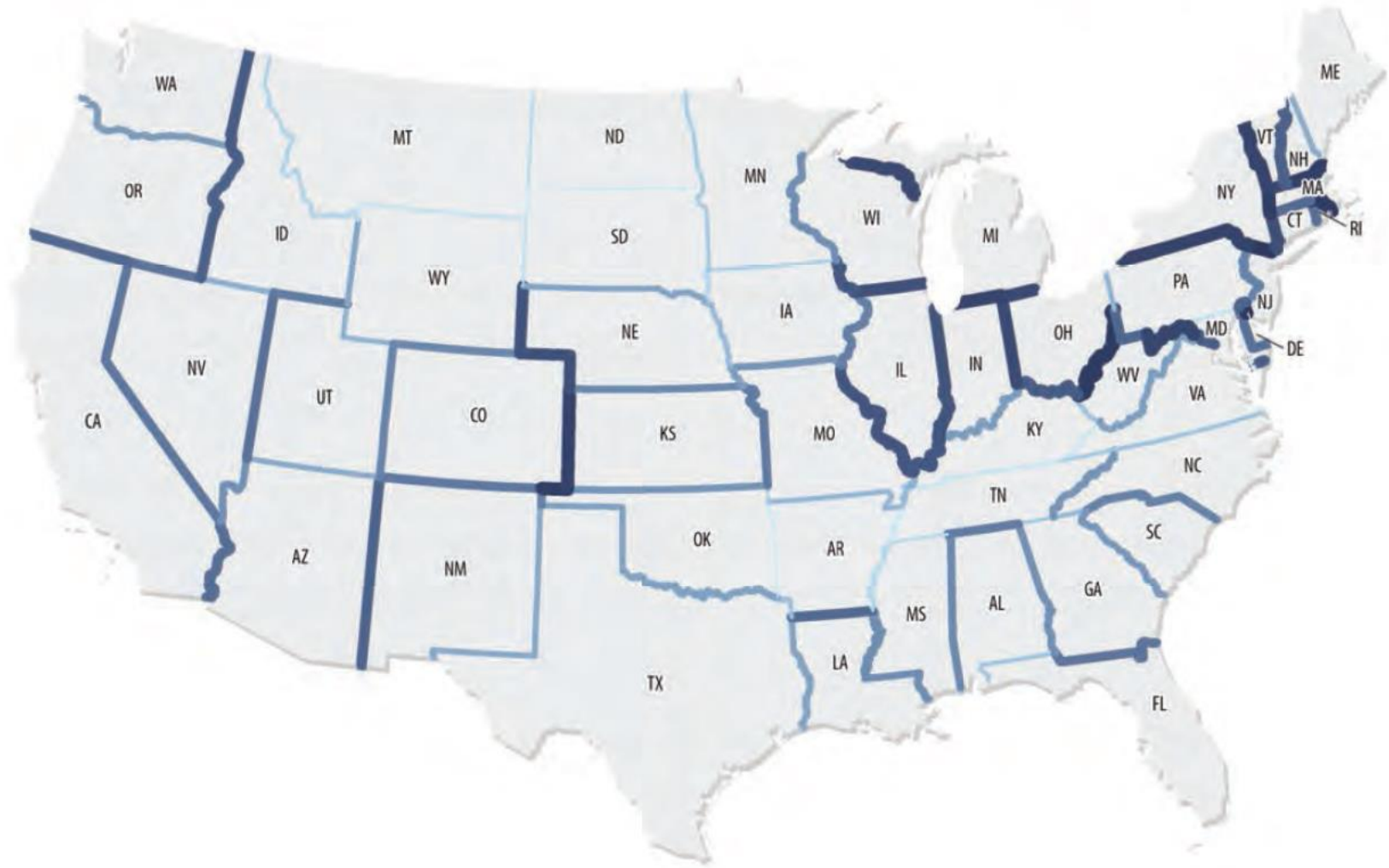


Efforts underway to standardize:

- Routes
- hours of operation
- Escorts
- lights



Border Friction Between States



0 150 300 600 Miles

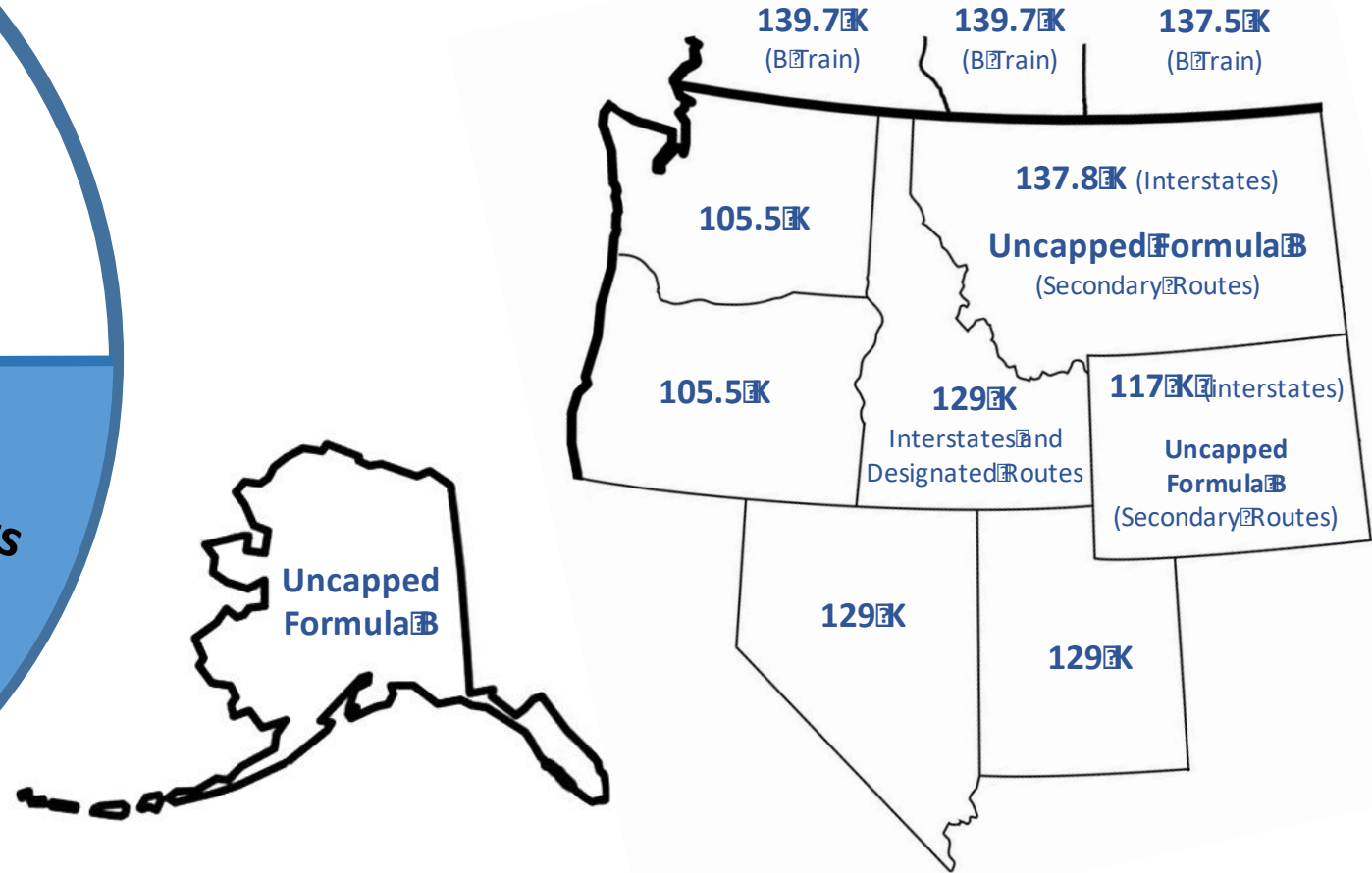


Your Safety. Your Mobility. Your Economic Opportunity.

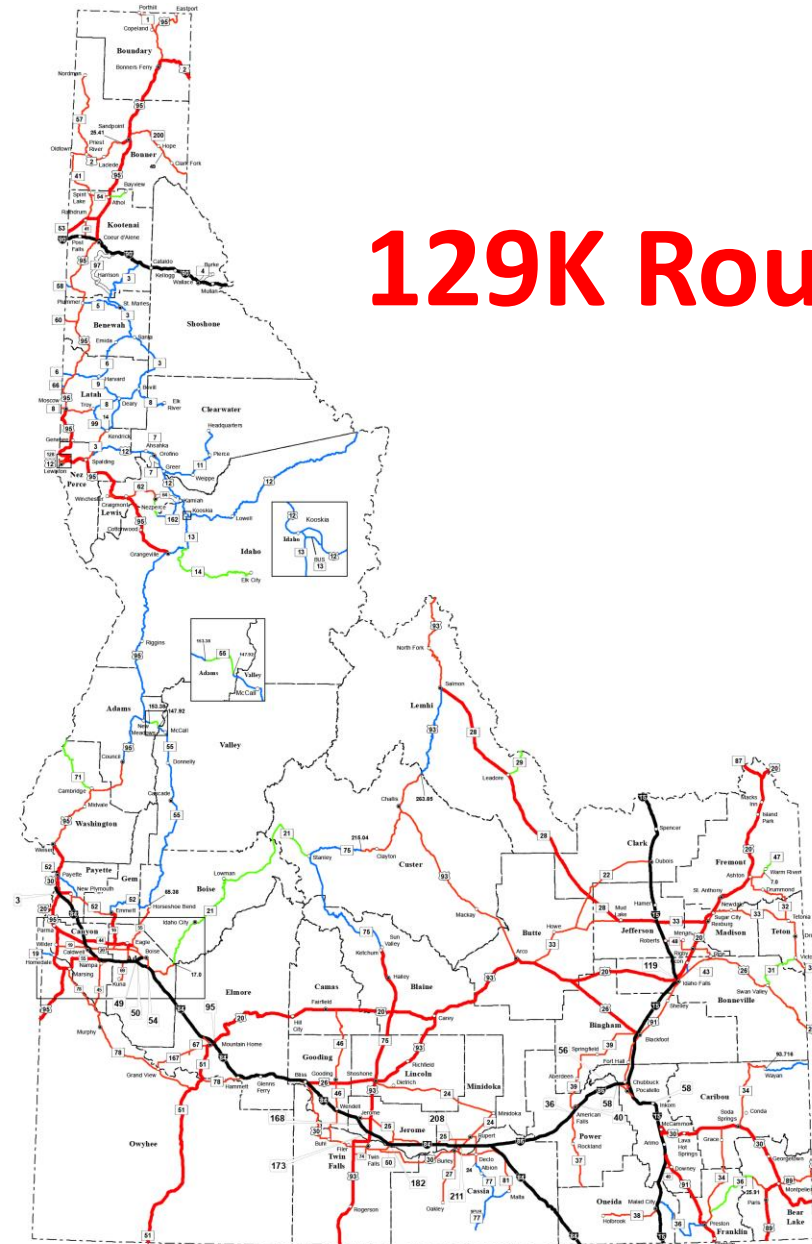
State Border Friction Ranking



Harmonization / Facilitation

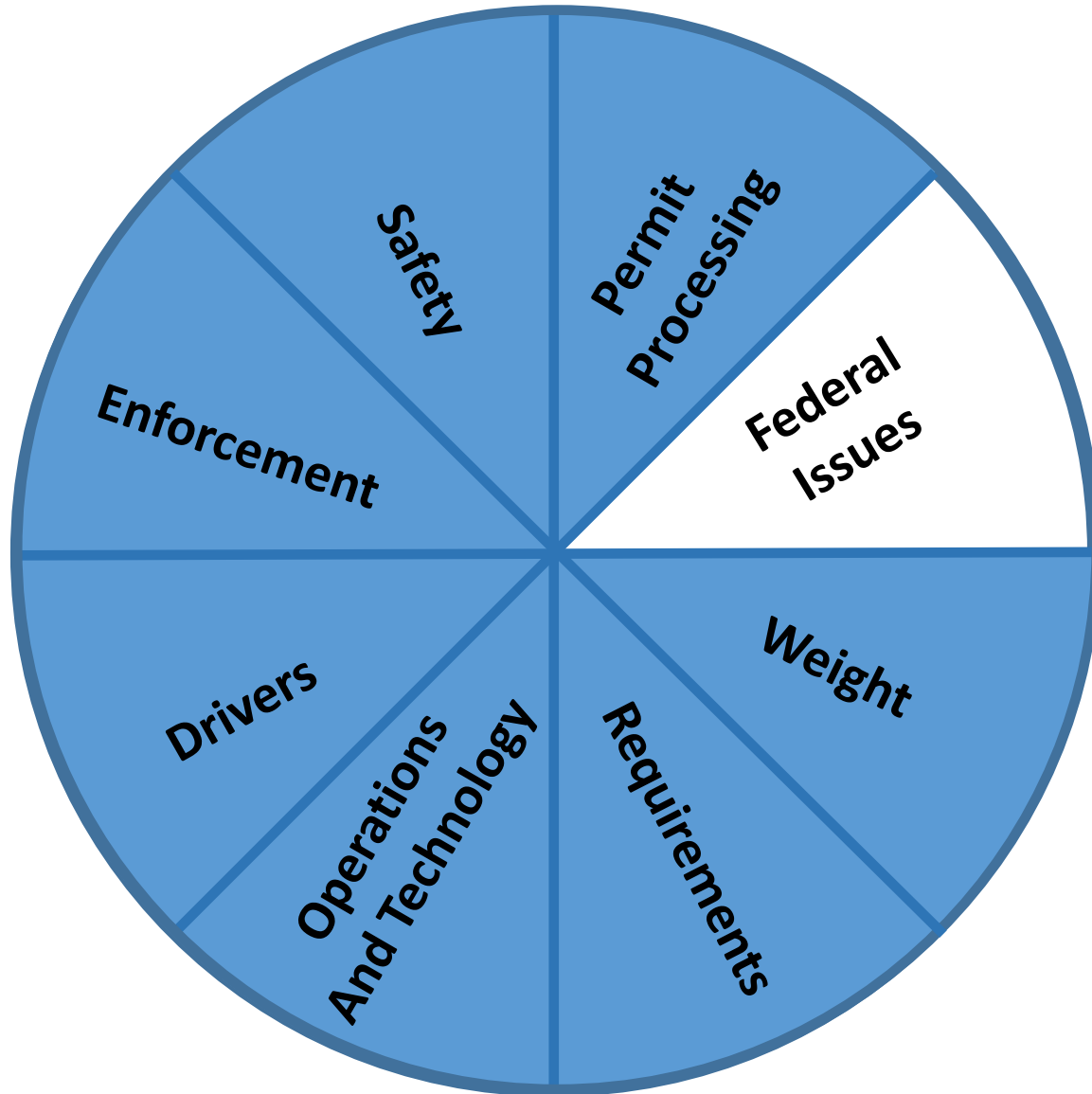


Harmonization / Facilitation



Your Safety. Your Mobility. Your Economic Opportunity.

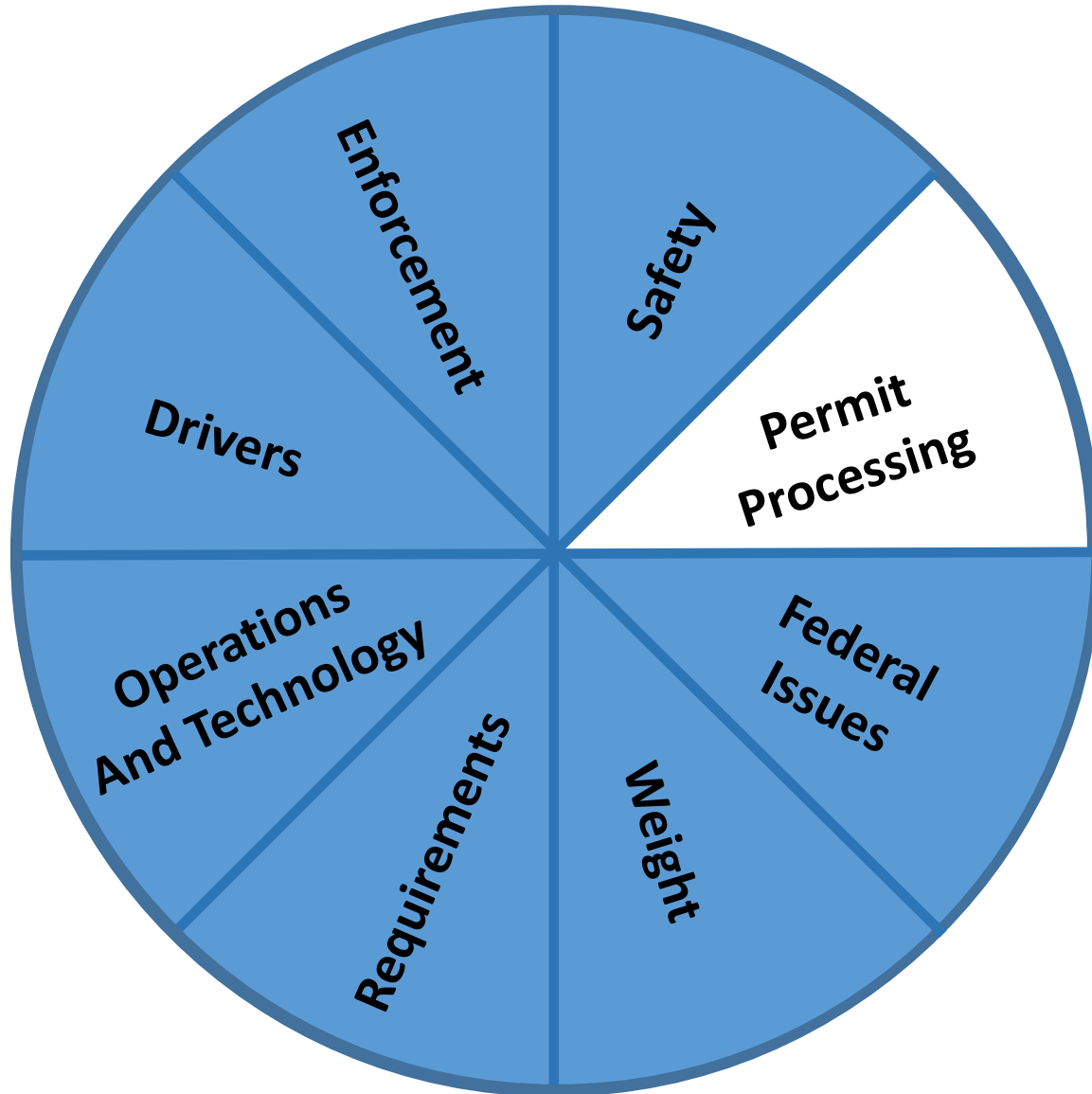
Harmonization / Facilitation



- **Grandfathered weights on interstates makes it difficult to establish uniform weights**



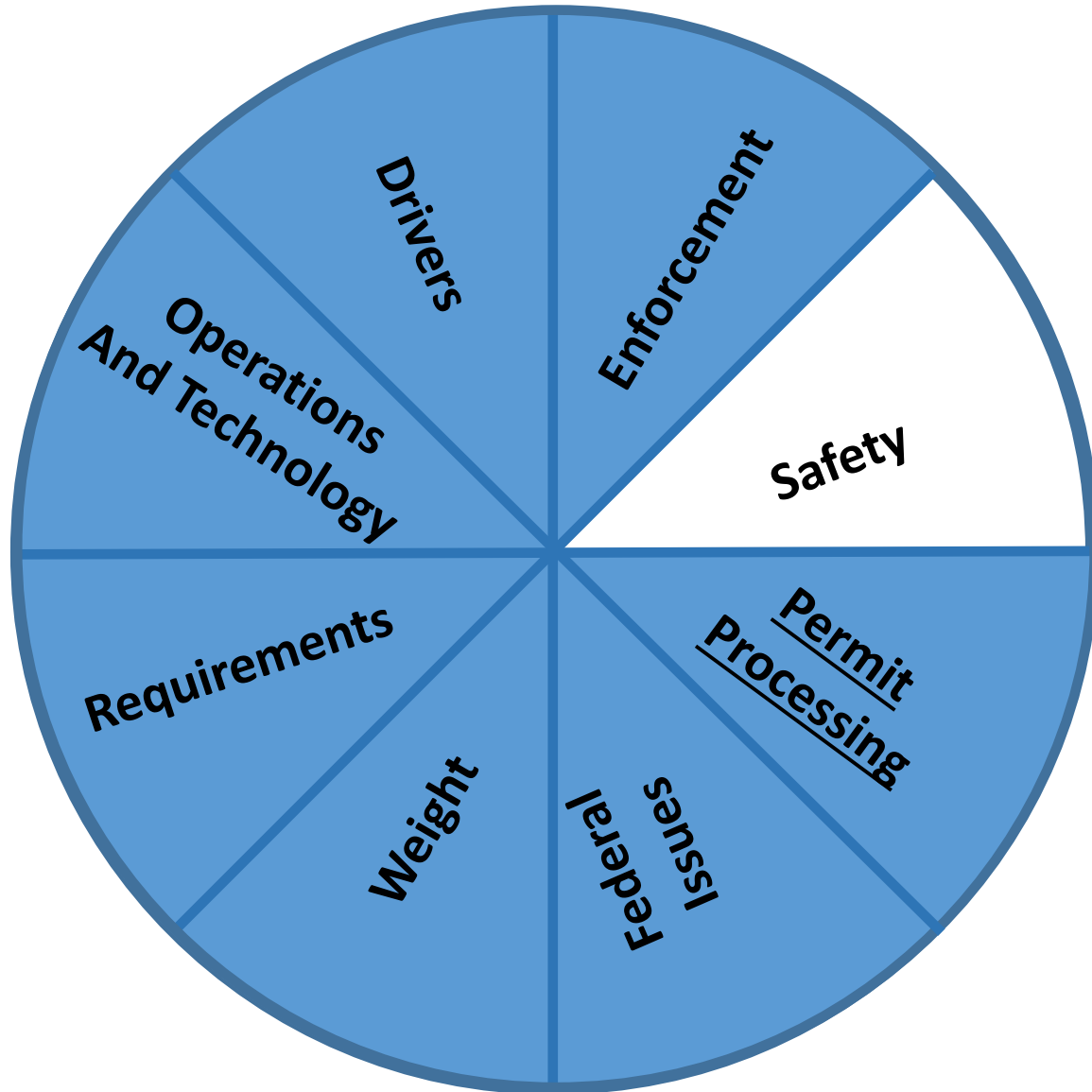
Harmonization / Facilitation



- **ITD rulemaking expanded local cooperation**
- **Need 24/7 permit system**
- **Regional**



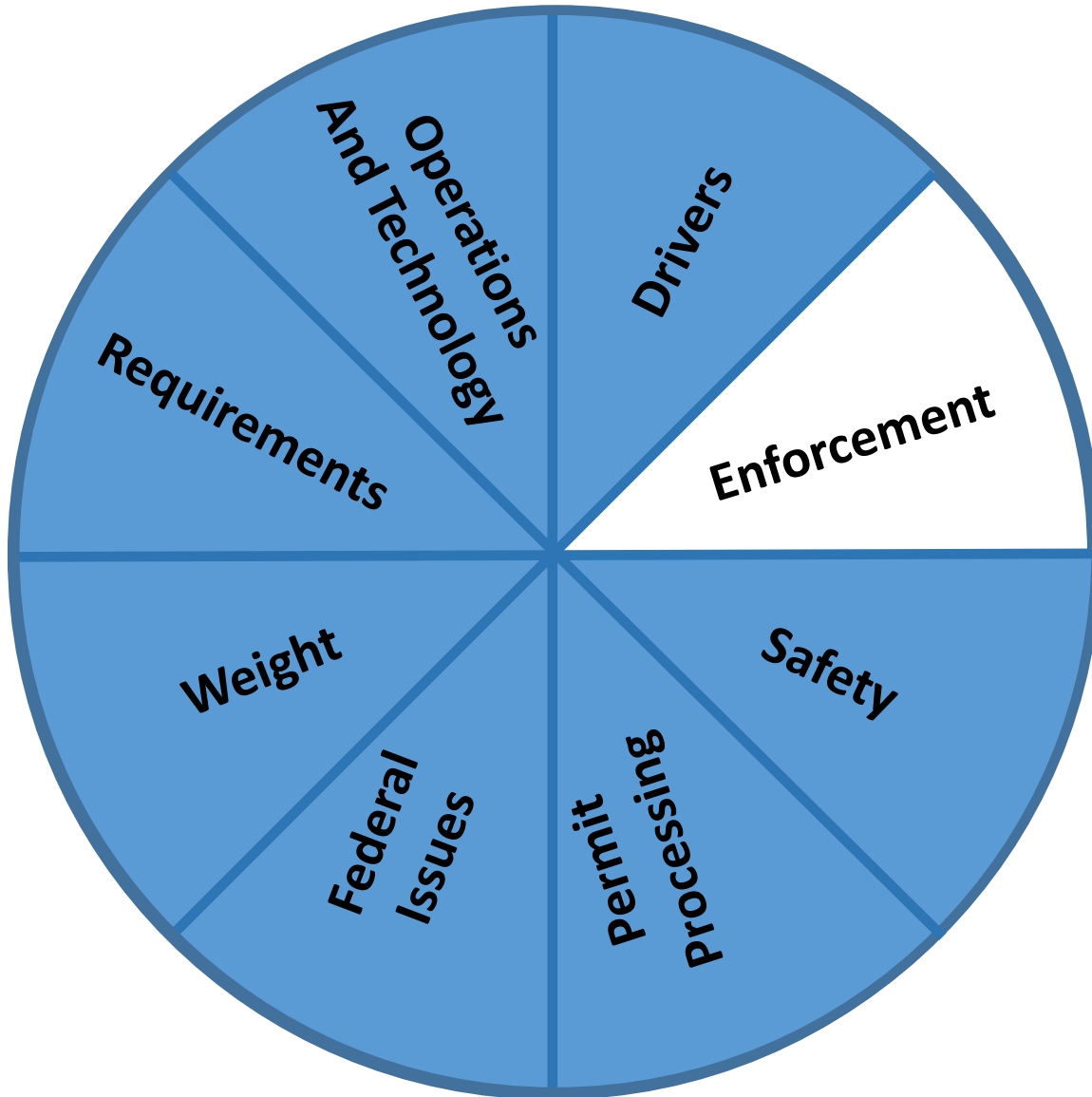
Harmonization / Facilitation



- **ISP / FHWA review**
- **Pre-permit inspections**
- **Options for brake safety**



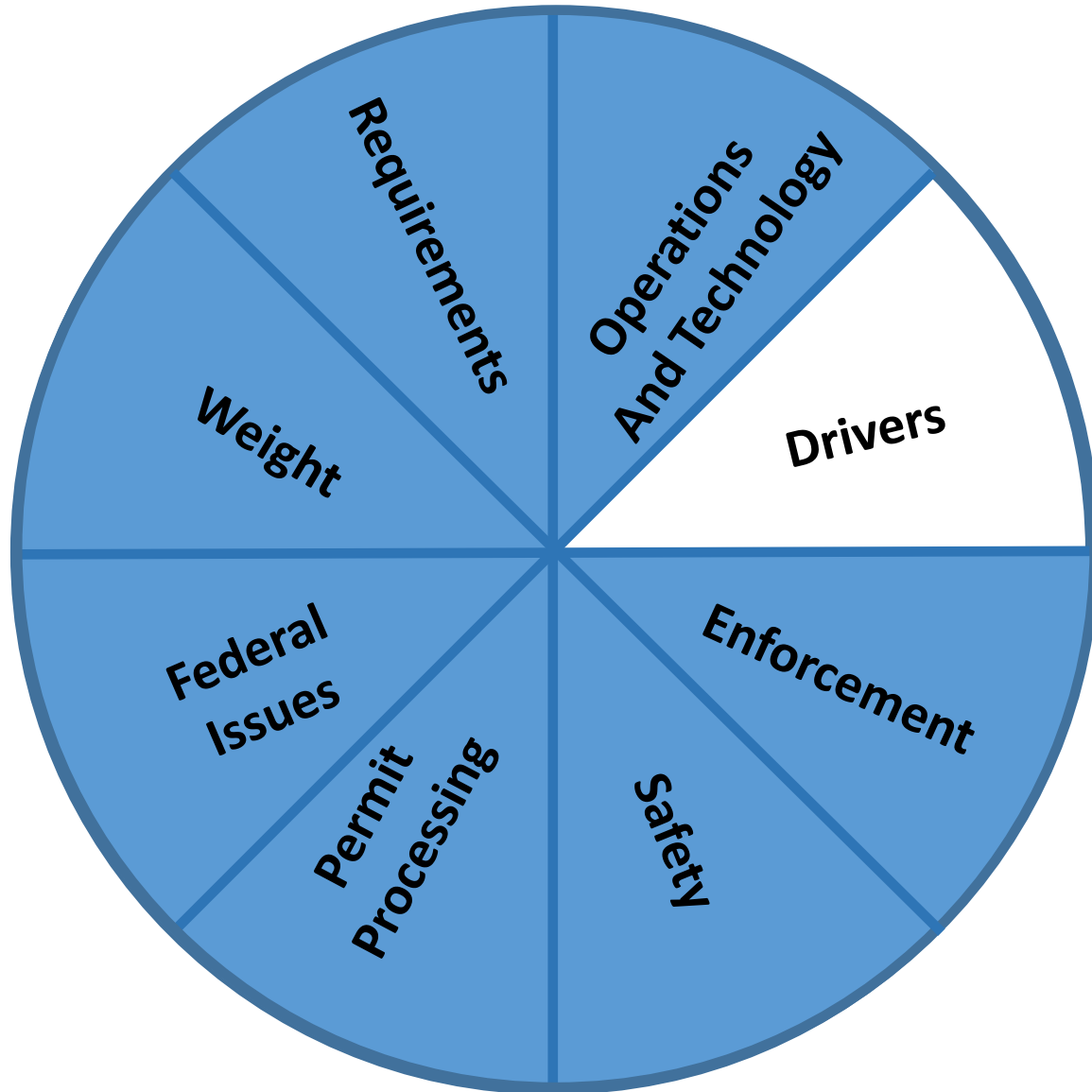
Harmonization / Facilitation



- **Weigh in motion**
- **Local routes**



Harmonization / Facilitation



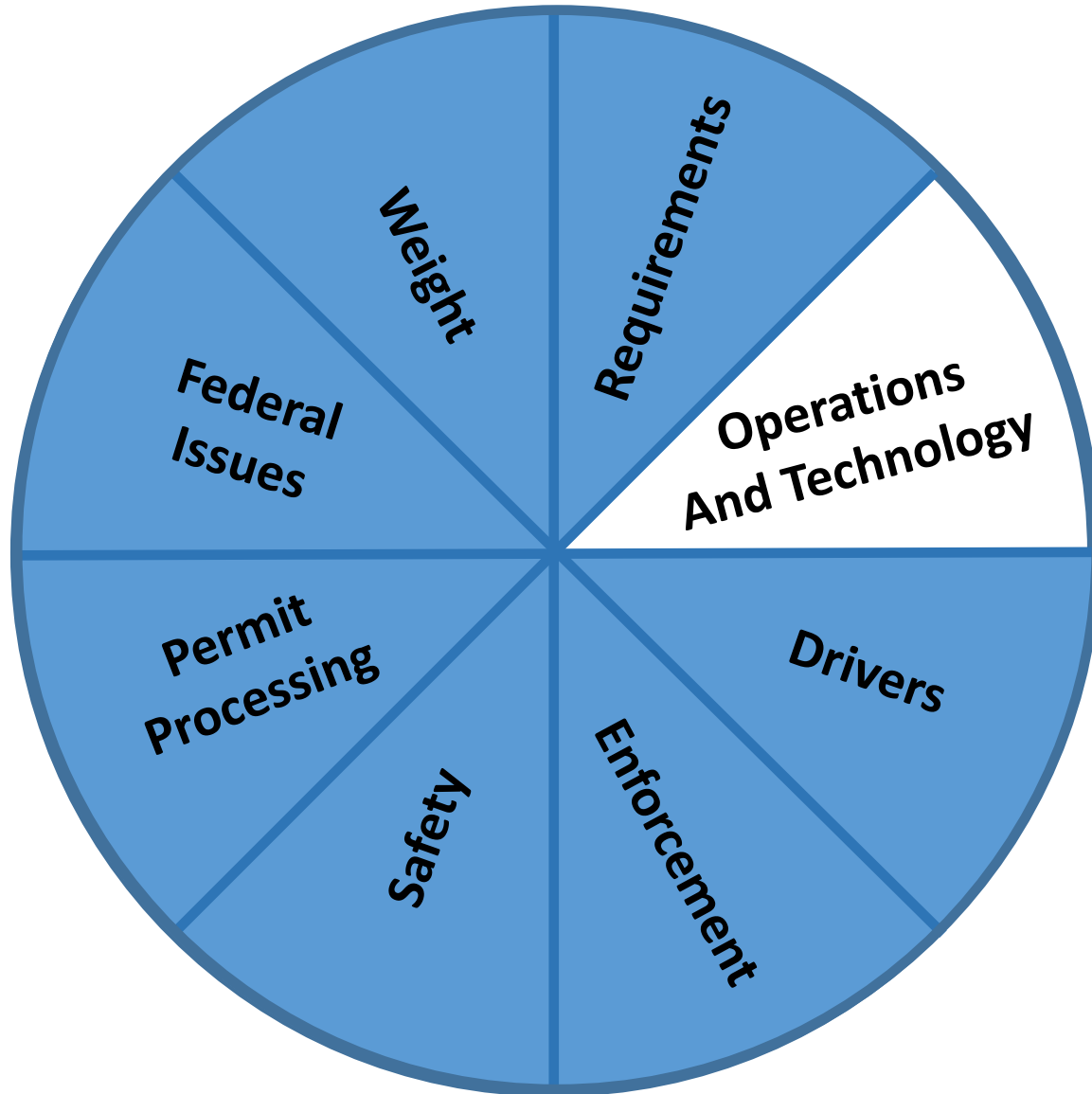
Driver Credentials

- Driver License Dashboard
- State-to-State Fraud Prevention
- CDL Medical Card

Driver Shortage



Harmonization / Facilitation



Operations:

- “Swarm the Storm”
Enhances mobility
- 79% availability
- 23% reduction in
winter crashes

Technology:

- Automated trucks

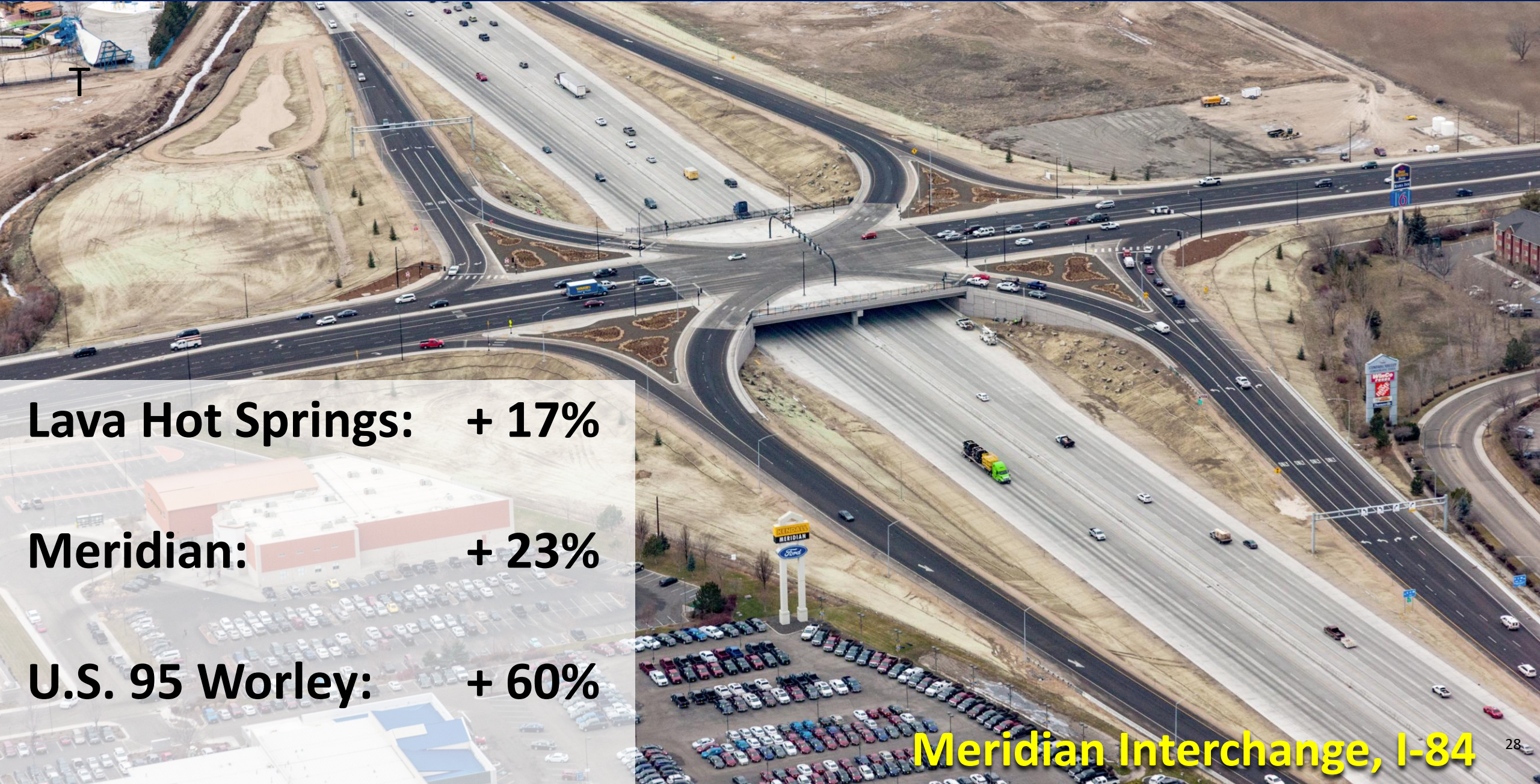


Boise is the fastest-growing area in the country for construction jobs.



Your Safety. Your Mobility. Your Economic Opportunity.

Huge Traffic Increases in GARVEE Corridors



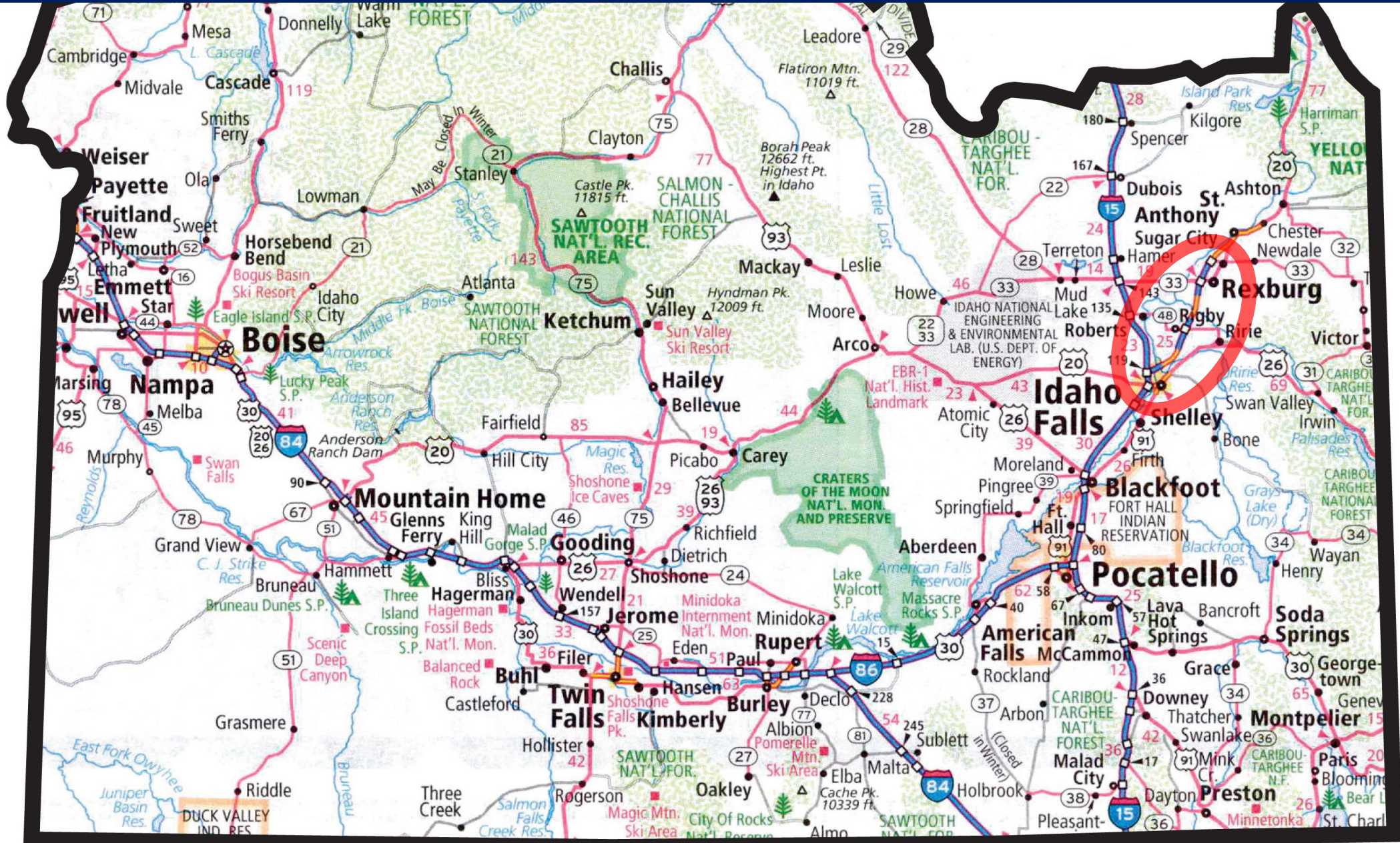
Lava Hot Springs: + 17%

Meridian: + 23%

U.S. 95 Worley: + 60%

Meridian Interchange, I-84

18% Increase on U.S. 20, Idaho Falls to Rexburg



GARVEE Investments are Saving Lives



T



Your Safety. Your Mobility. Your Economic Opportunity.

10-Mile Interchange, I-84

Example: Idaho Forest Group

Grows, harvests, manufactures, and distributes wood products

One of America's largest lumber producers

Nearly one billion board feet per year

Markets around the globe



Example: Idaho Forest Group



Each mill receives approximately one million tons of Idaho lumber per year

Distributes finished products via truck and rail within the U.S.

Distributes via truck and water to customers in Japan

Example: Amalgamated Sugar Company

Three factories in Idaho produce 900,000 tons (approx. 11% of U.S. sugar market)

One of Idaho's largest users of the 129K system in Idaho

Ships beet-pulp pellets to Asian markets using rail to link to ports in Oregon.



Harmonization Improves Commerce



Idaho Transportation Department Presentation to:

PNWER 2016